



The Boxer NETGEAR® PRO Series is our newest, most affordable, high performance 5G case antenna designed to provide an on-the-go network. This special version of the Boxer case is a collaborative design with NETGEAR® to be the most advanced 5G network in a box in the industry. This case is compatible with the NETGEAR® Nighthawk® M1, Nighthawk® M5, or Nighthawk® M6 mobile router (router not included). This industry first, low-cost solution is our highest performance 5G compact antenna. Small enough to fit in a backpack or have as a carry-on while extending the life of your current router and providing extra protection for your device.

The Boxer NETGEAR® case uses shock absorption and impact resistant resin to reduce damage and loss of performance due to hard use.

**Patent Pending**



### Configurations 2:1

Mobile Wireless | On the Go | Remote Monitoring



#### ***Most Portable Case***

Fit for a Backpack or Carry-On

#### ***Battery Life***

Extend the Battery Life of Your Device

#### ***Durable***

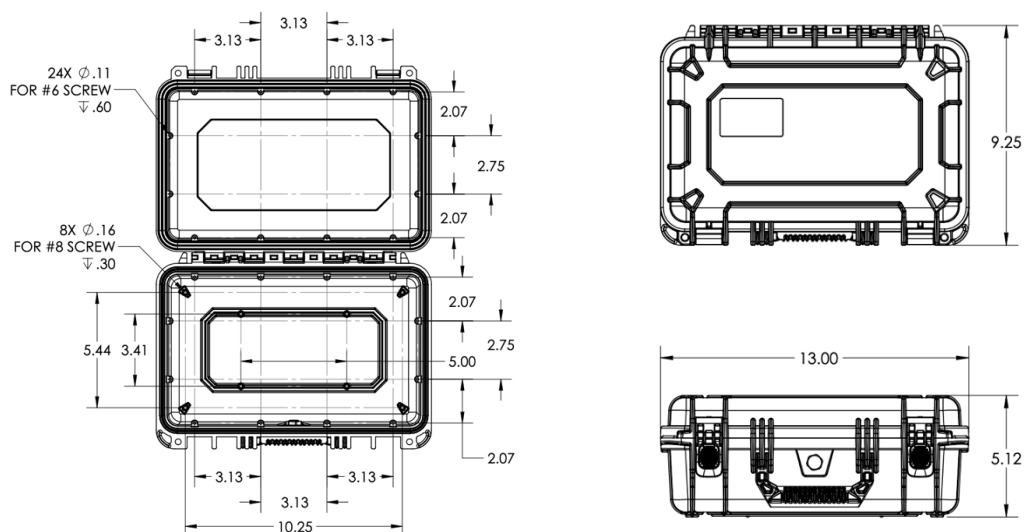
Shock Resistant Mobile Case

- 2X2 MIMO CELLULAR
- OMNI-DIRECTIONAL
- 600 MHz – 6 GHz
- 13 in X 9.25 in X 5.12 in
- ROUTER PROTECTION
- SCREWDRIVER FOR INSTALL

# Specifications

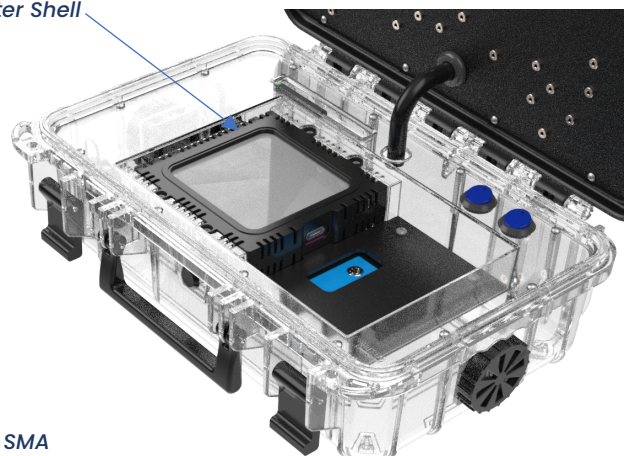
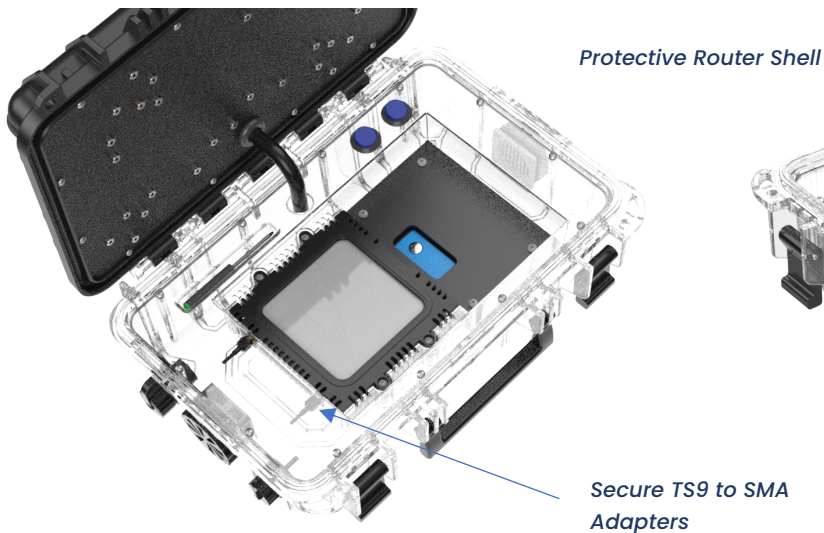
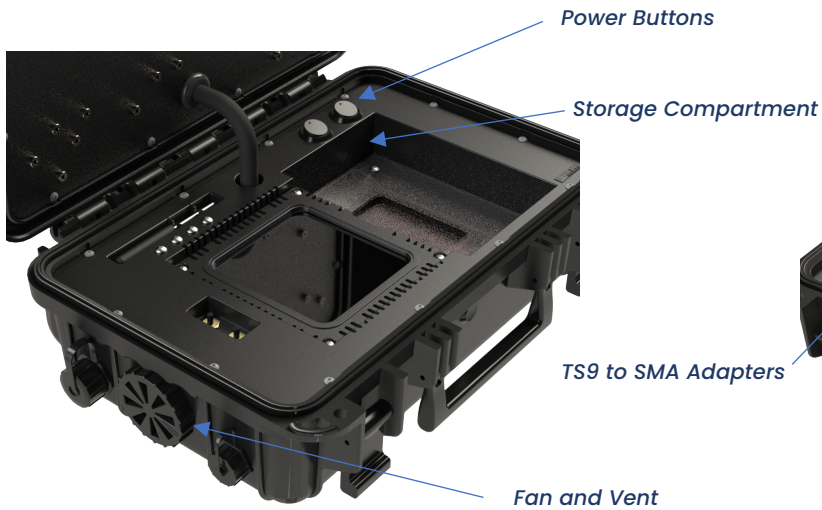
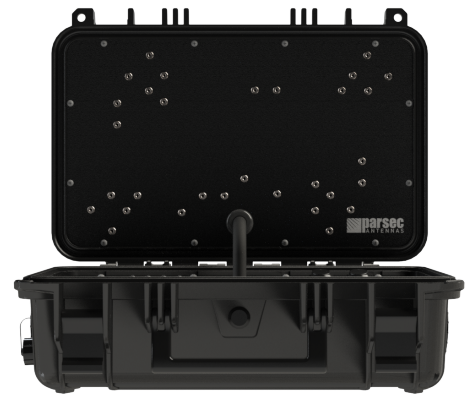
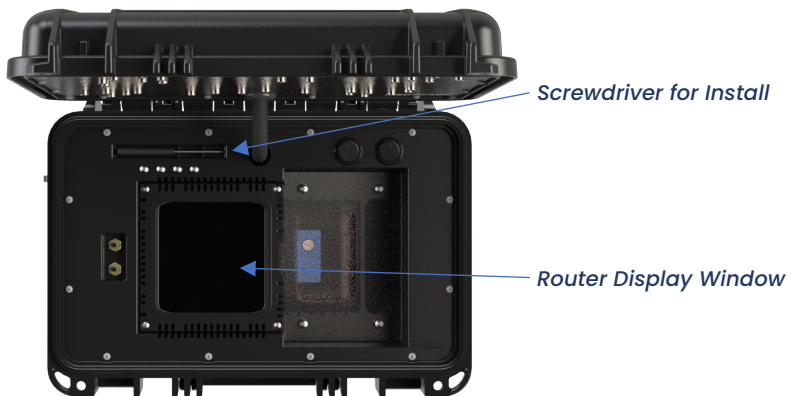
Frequencies			
4G/5G Cellular	617-894 MHz 1710-2700 MHz 3400-4000 MHz 5150-5925 MHz	Wi-Fi	2400-2483.5 MHz 4900-5900 MHz
4G/5G Bands			
North America	B2, B4, B5, B7, B12, B14, B17, B25, B26, B29, B30, B41, B46, B48, B66, B71 n2, n5, n12, n25, n26, n41, n48, n66, n71, n77		
EMEA	B1, B3, B7, B20, B28, B42, B43, B46 n1, n3, n28, n77, n78		
Mechanical		Environmental	
Dimensions	13 inch X 9.25 inch X 5.12 inch	Operating Temperature	-30 °C to 85°C OR -22 °F to 180°F
RF Cable Length	13 inch Pigtails	Ingress Protection	IP54 *when all ports and lid are closed
Power	120 Volt AC	Battery (not included)	20K Battery
Router Options (not included)	Nighthawk® M1, M5, M6, M6 PRO	Max Router Size	5.8" X 5.1" X 1.15"
<ul style="list-style-type: none"> <li>• Custom colors available, reach out to Parsec for more information.</li> <li>• For different router configurations, reach out to Parsec for more information.</li> <li>• Temperature range is for antenna only. Equipment installed inside the enclosure may have a different temperature range.</li> <li>• *Openings in the enclosure for options like fans and power cords may reduce ingress protection even with covers installed.</li> </ul>			

# Dimensions





## Product Images



## Electrical Specifications

ID & Unit	Port	Parameters	Typ.
Radiated Efficiency (%)	CELL 1 thru 2	617-698 MHz	70
	CELL 1 thru 2	698-984 MHz	75
	CELL 1 thru 2	1710-2200 MHz	85
	CELL 1 thru 2	2200-2700 MHz	80
	CELL 1 thru 2	3400-4000 MHz	70
	CELL 1 thru 2	5150-5925 MHz	85
Peak Gain (dBi)	CELL 1 thru 2	617-698 MHz	2.5
	CELL 1 thru 2	698-984 MHz	3.5
	CELL 1 thru 2	1710-2200 MHz	6
	CELL 1 thru 2	2200-2700 MHz	5
	CELL 1 thru 2	3400-4000 MHz	5
	CELL 1 thru 2	5150-5925 MHz	8
Return Loss 50Ω (dB)	CELL 1 thru 2	617-849 MHz	10
	CELL 1 thru 2	849-894 MHz	8
	CELL 1 thru 2	1710-2700 MHz	14
	CELL 1 thru 2	3400-4000 MHz	8
	CELL 1 thru 2	5150-5925 MHz	9
Isolation (dB)	CELL	617-698 MHz	7
	CELL	698-894 MHz	8
	CELL	1710-2200 MHz	18
	CELL	2200-2700 MHz	20
	CELL	3400-4000 MHz	22
	CELL	5150-5925 MHz	27
Polarization (dBi)	CELL		Linear
Max Input Power (Watts)	CELL		10
RF Connectors	CELL		SMA(M)
RF Cable Type	CELL		RG316
<ul style="list-style-type: none"> <li>Isolation, return loss, and peak gain include cable loss from 13 inch cables supplied.</li> <li>SMA connectors have a max torque of 3-5 in-lbs.</li> <li>Electrical specifications based on antenna mounted in the lid of the plastic enclosure.</li> </ul> <p><b>*Battery, router, and SIM Card are not included.</b> Customers should contact Parsec's authorized distributors and VAR's listed on our website for a full list of routers and other options that will complete the Emergency Hot Spot.</p>			



## Ordering

*Our Boxer antenna consists of a protective case with the antenna built into the lid.*

Config.	Part Number	Description
2:1	PRO2BX2L-NG	2 Cellular, Black Case with Antenna Build into Lid

## Part Number Key

*Part number example for a 2:1 Boxer NETGEAR® antenna: PRO2BX2L-NG*

Description	Abbreviation	Part Number
All PRO Series	PRO	PRO
Number of Antennas in Housing/Configuration	2:1	PRO2
Antenna Abbreviation for Boxer	BX	PRO7BX
Number of Cellular Elements	#L	PRO2BX2L
NETGEAR® Version for M1, M5, & M6 Hot Spot Routers	-NG	PRO2BX2L-NG
Custom case colors and connectors are available. For more information contact <a href="mailto:sales@parsec-t.com">sales@parsec-t.com</a> .		

## Antenna Options

Description	PRO2BX2L-NG
Antenna	YES
Fan and Vent	YES
USB-C Charging Port	YES
1x RJ-45 Connectors	YES
Router Shell	YES
Top Cover with Battery Tray	YES
Battery: ChargeTech 20K AC Battery Pack- Portable Power (Not Included with Antenna. Must Be Purchased Separately.)	
For more information, see our installation instructions at <a href="http://Parsec-t.com">Parsec-t.com</a> for Boxer Case Series.	

## Additional Hardware Accessories

Accessory	Part Number
RJ-45 Adapter	PTA0415
USB-A Panel Mount	PTA0448
USB-C Connector	PTA0633
Top Cover Plate Mounting Screws	PTA0071
40mm Vent and Cap Kit	PTA0477
SMA Wrench, Key Chain	PTA0194
Service: Router Installation	PTA-Install-150