

BOXER-NG

Installation Instructions



Table of Contents

Antenna Versions..... 2

Required Tools & Accessories 2

Battery and Router Installation..... 3

Operational Setup 9

Battery Operation and Safety Guidelines 12

Antenna Versions

The Boxer-NG case antenna comes with the features listed below.

- RJ-45 Port
- USB-C Charger
- Battery Operated (battery not included)
- 40mm Fan

Required Tools & Accessories

The table below lists the required accessories for the NG version of the Boxer antenna.

	Boxer NG
Provided with Antenna	<ul style="list-style-type: none">• PTA0071B Black Round Head Screws, 12 pcs• Ethernet Cords *• Battery Tray for ChargeTech 20K Battery Pack• M5 – M6 Router Tray• SMA(F) – TS9(M) Adapter, 2 pcs• Cable Ties• Screwdriver
To Be Purchased By Customer	<ul style="list-style-type: none">• 20K AC Battery Pack (ChargeTech #CT-600060)• Ethernet Cord **

* For connecting the router to the ports on the case

** Optional, for connecting external devices to the case, length as required by customer

Battery and Router Installation

Step 1: Mount the ChargeTech 20K battery pack to the Battery Tray Assembly (Boxer NG only).

- A. Use the provided screwdriver to unscrew the screws securing the M5-M6 Router Assembly, Battery Cover, and Battery Holders.

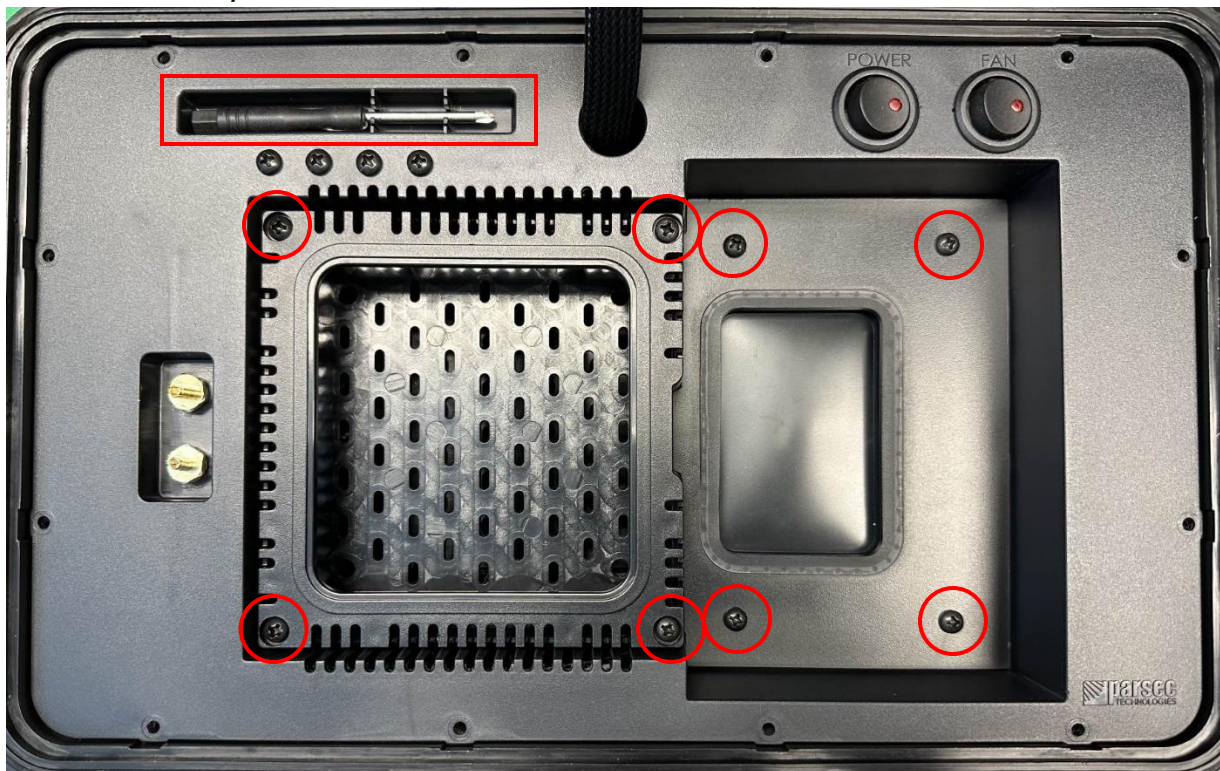
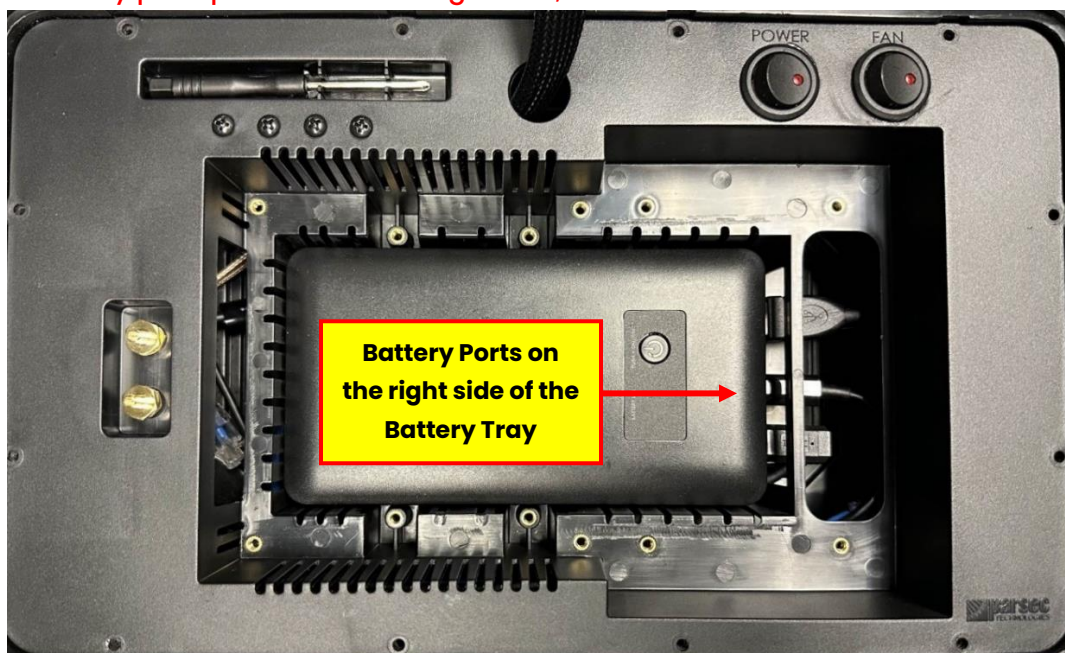
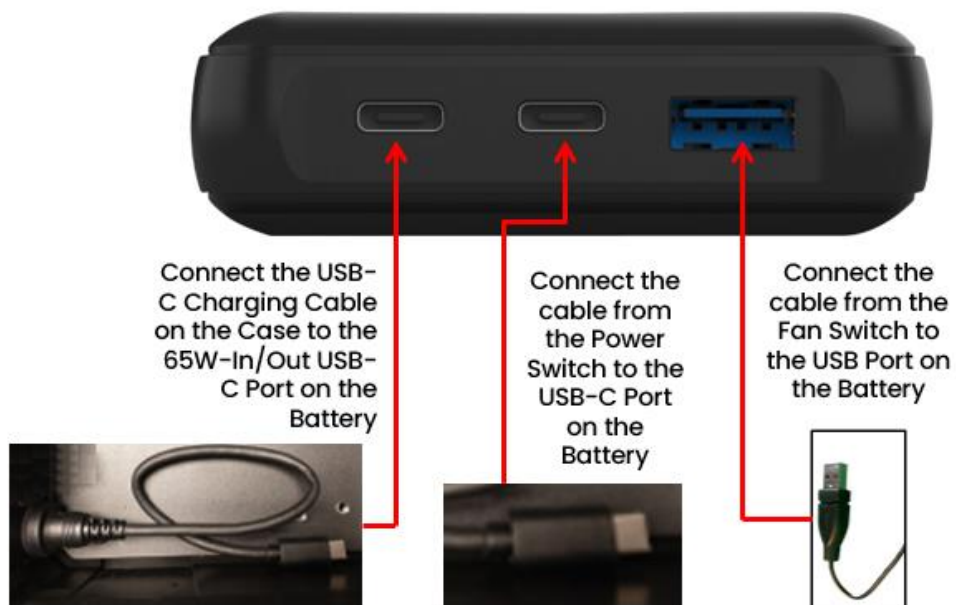


Figure 1: Remove the screws securing the Router Assembly and Battery Cover

- B. Insert the battery pack into the battery tray and connect the cables, as shown in Figures 2-3. **Ensure that the battery pack ports are on the right side, as shown below.**





Figures 2-3: Installing the Battery Pack into the Boxer-NG Case

C. Secure the battery pack with the Battery Holders and screws as shown in Figure 4:

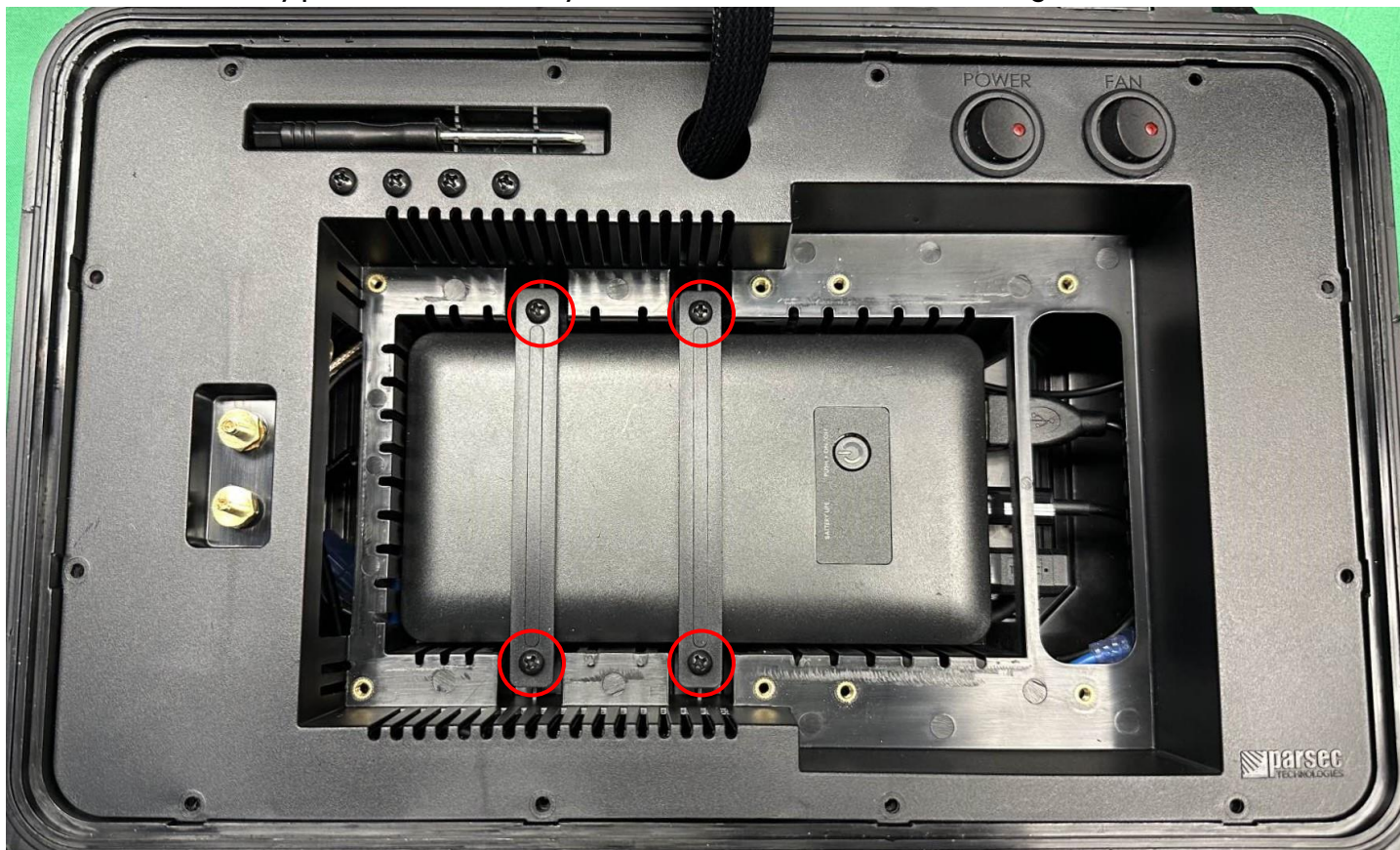


Figure 4: Place the ChargeTech battery pack into the battery tray. (Boxer NG)

- D. Install the SMA(F) – TS9(M) Adapters to the Router as shown in Figure 5:



Figure 5: Installing the SMA(F) – TS9(M) Adapters

- E. Install the Router and Adapters to the M5-M6 Router Base and install the M5-M6 Router Cover as shown in Figures 6-7:



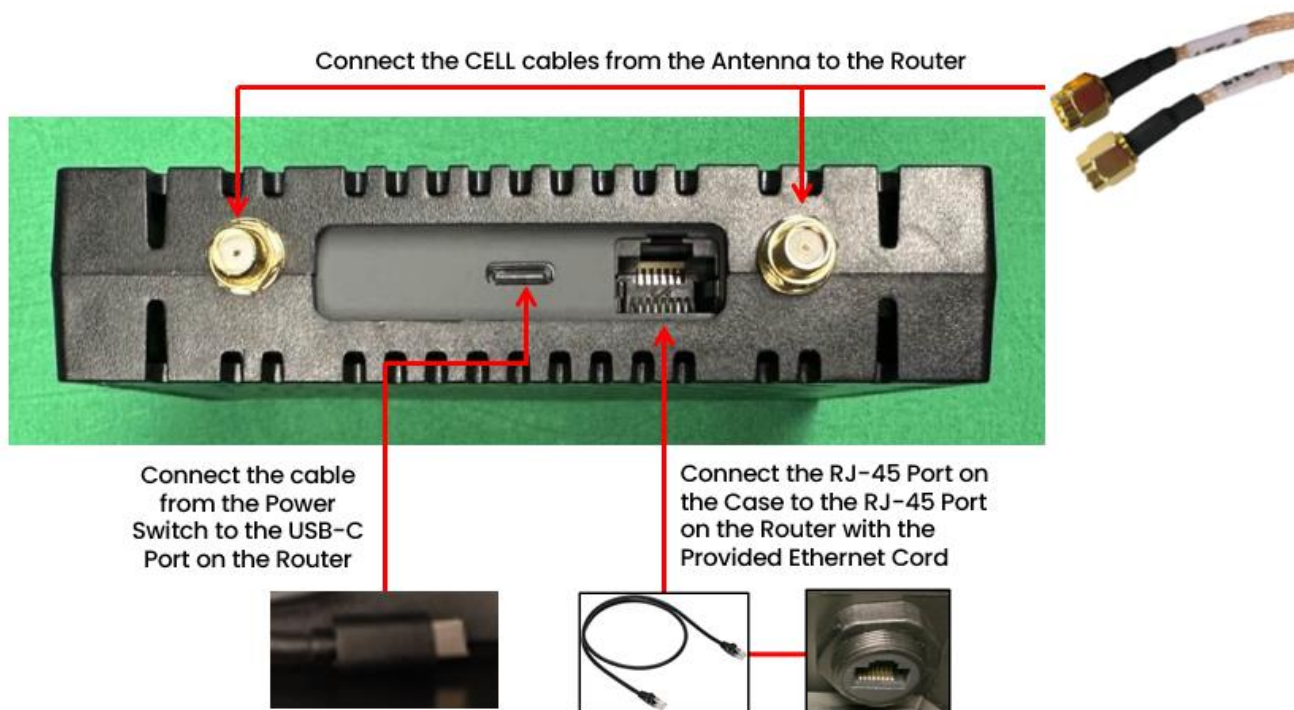
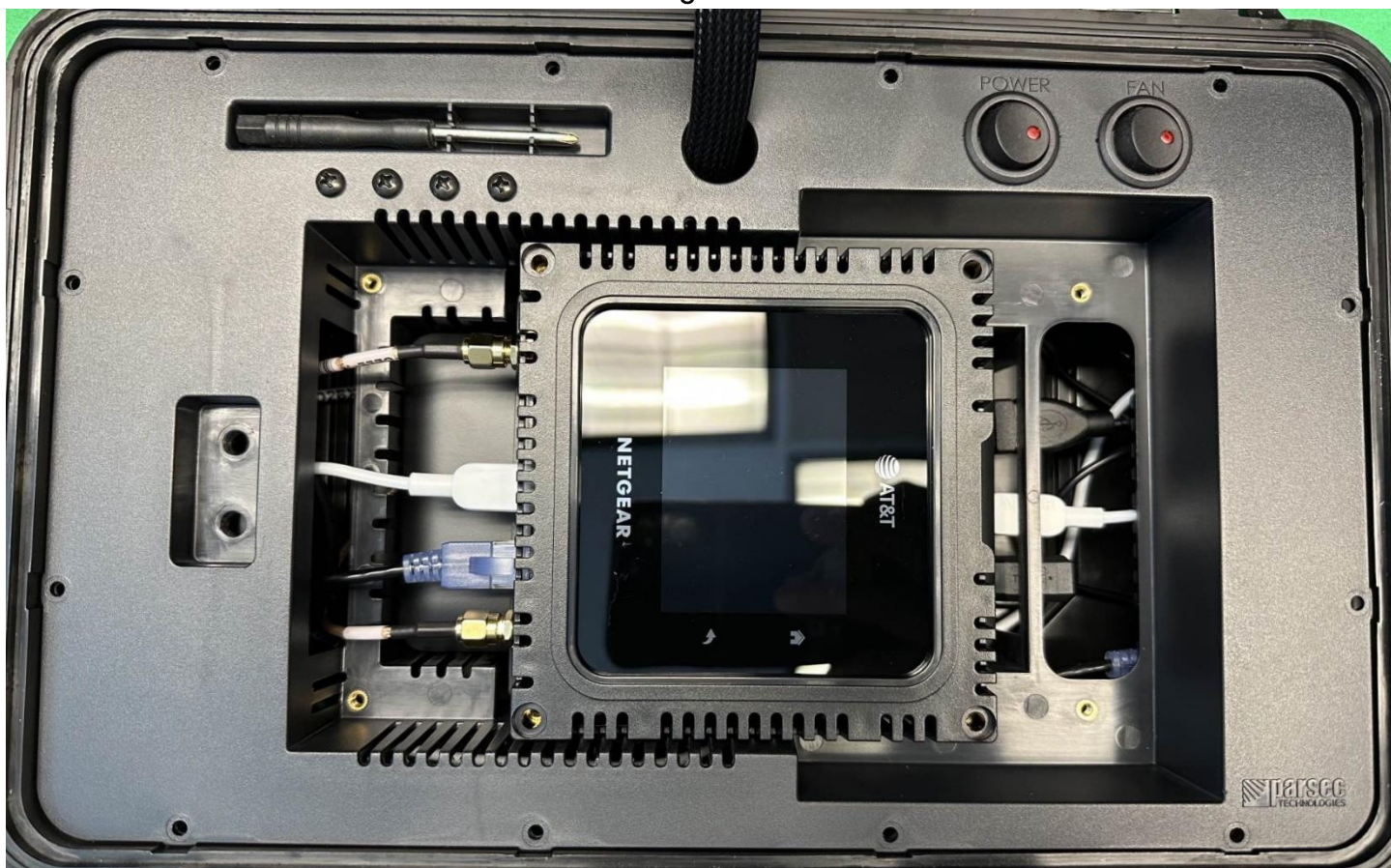
Figures 6-7: Installing the Router and Adapters to the M5-M6 Router Base and Cover

- F. Secure the Adapters using the washer and nut as shown in Figure 8:



Figure 8: Secure the adapters using the washer and nut

G. Install the cables to the Router as shown in Figures 9-10:



Figures 9-10: Installing the cables to the Router (Boxer NG)

H. Slide the Router Assembly to the left and secure with the Qty. 4 Long screws as shown below:

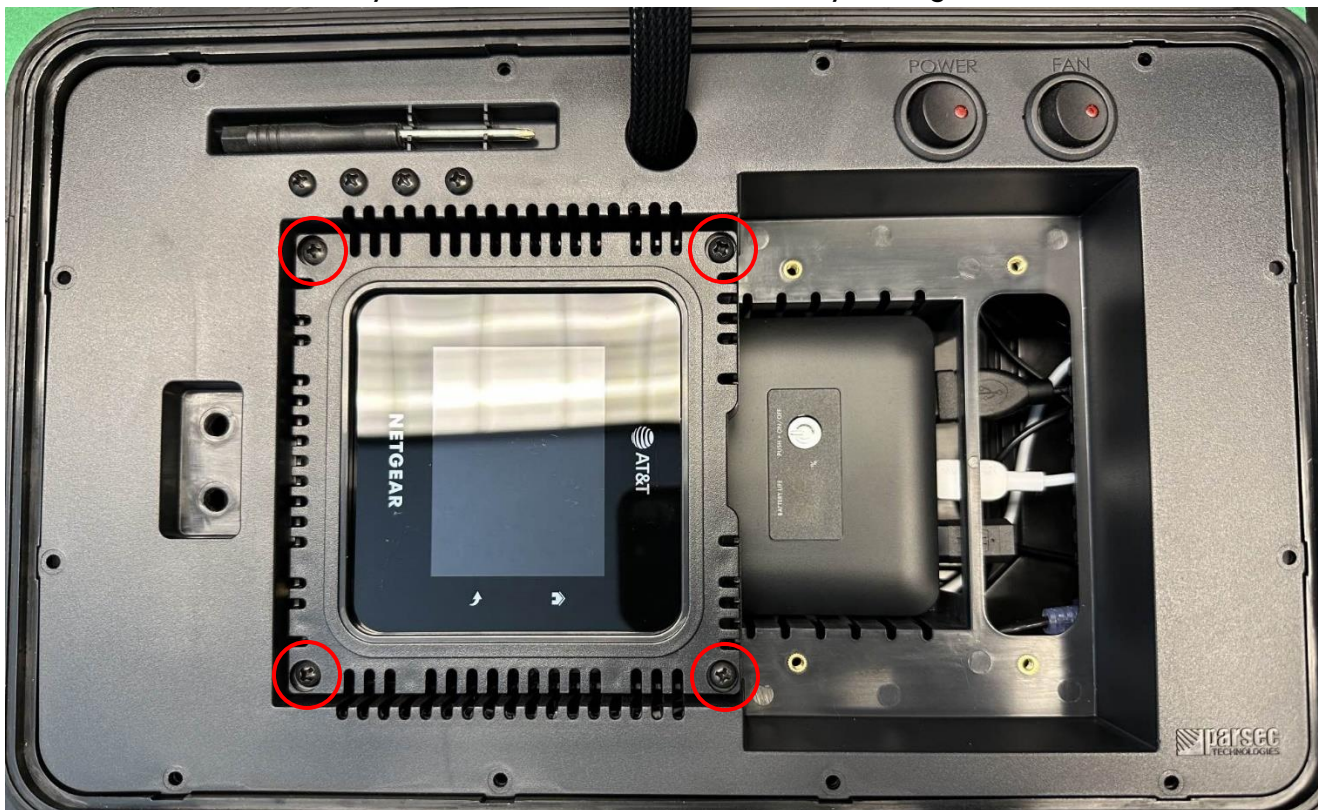


Figure 11: Securing the Router Assembly

I. Install the Battery Cover as shown:

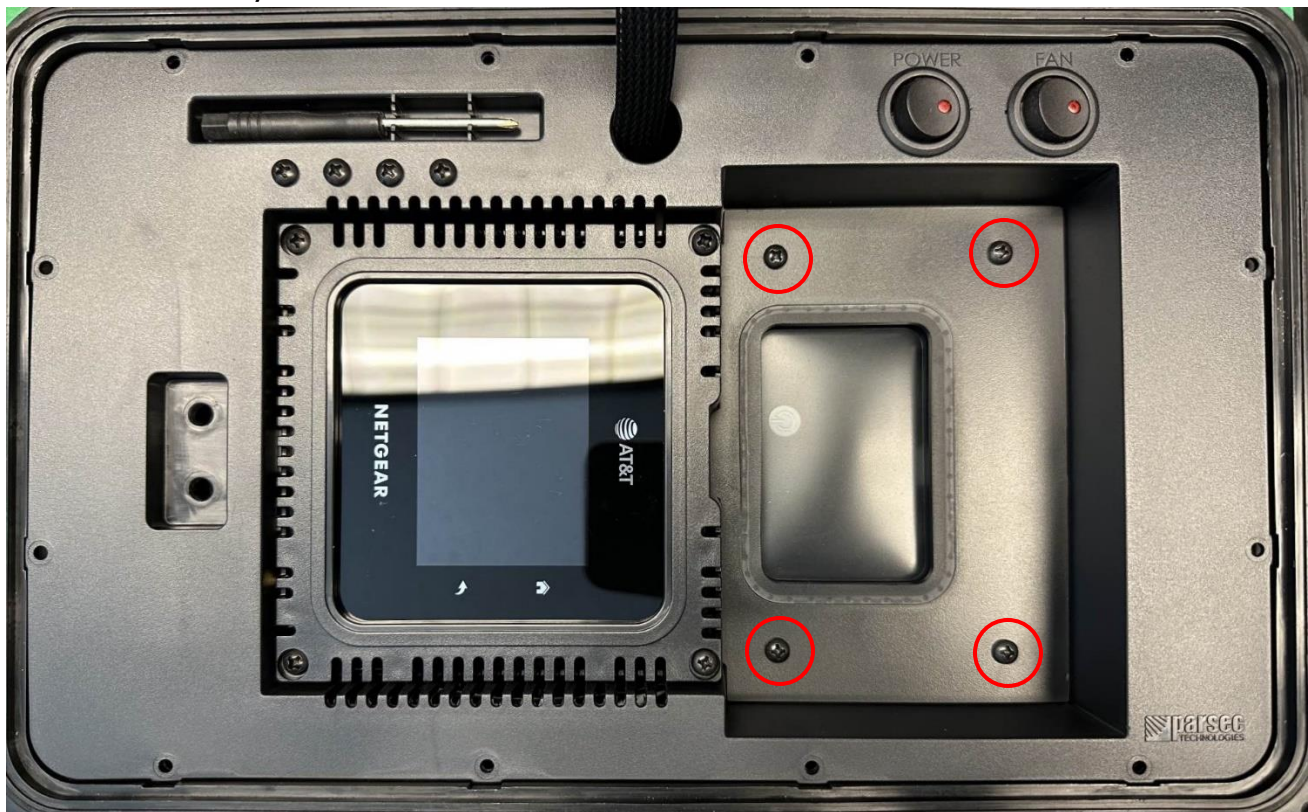


Figure 12: Installing the Battery Cover

- J. Secure the tray to the case using the twelve PTA0071B black oval head screws provided in the kit, as shown in Figure 13.

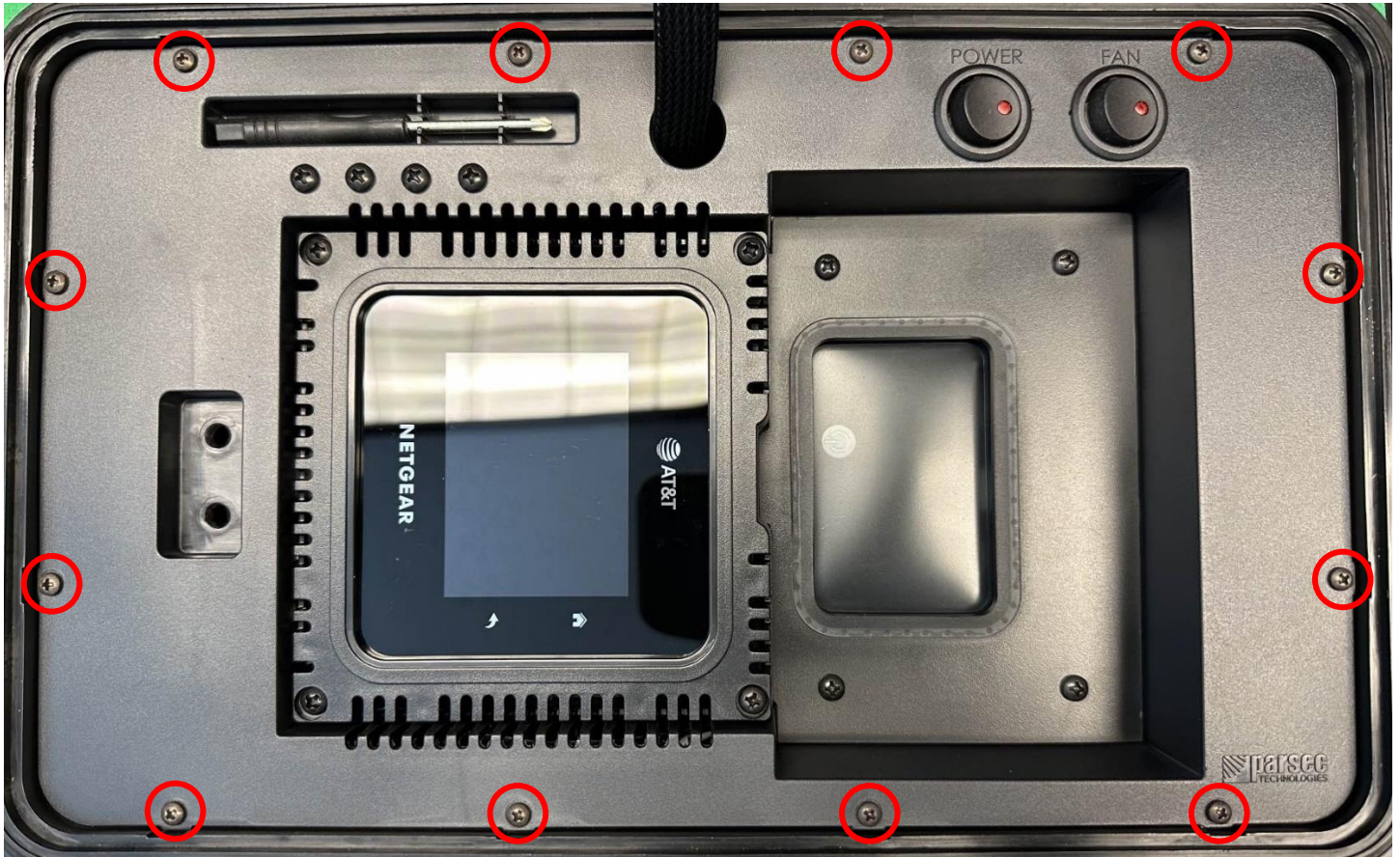
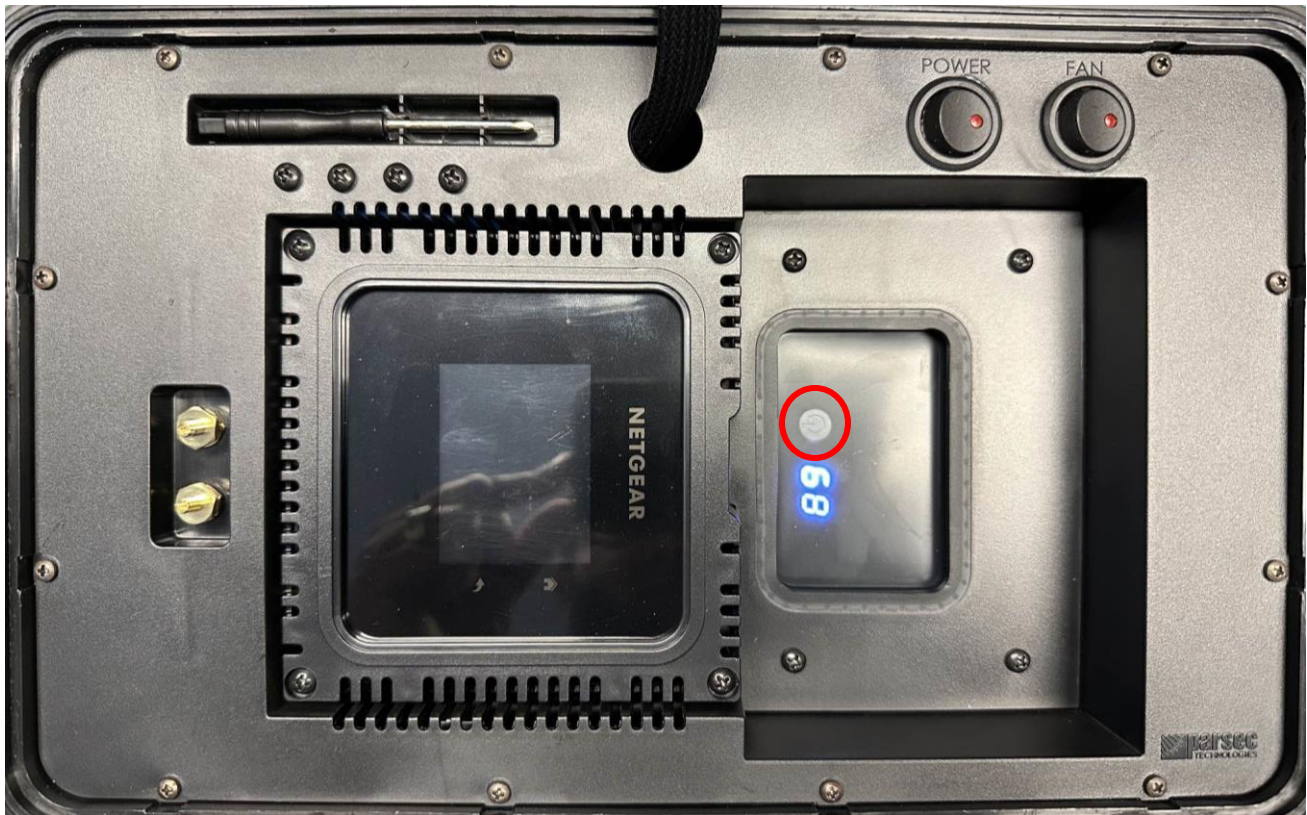


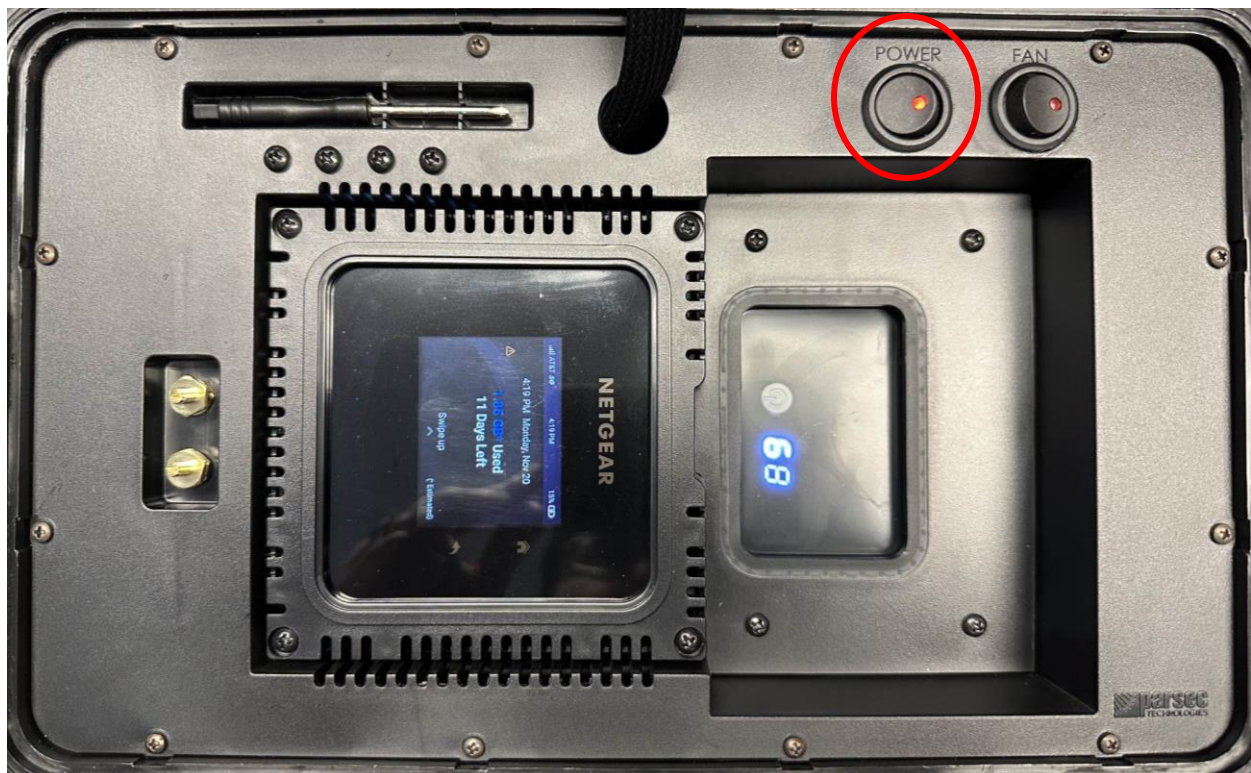
Figure 13: Fasten the cover plate to the case using PTA0071B screws

Operational Setup

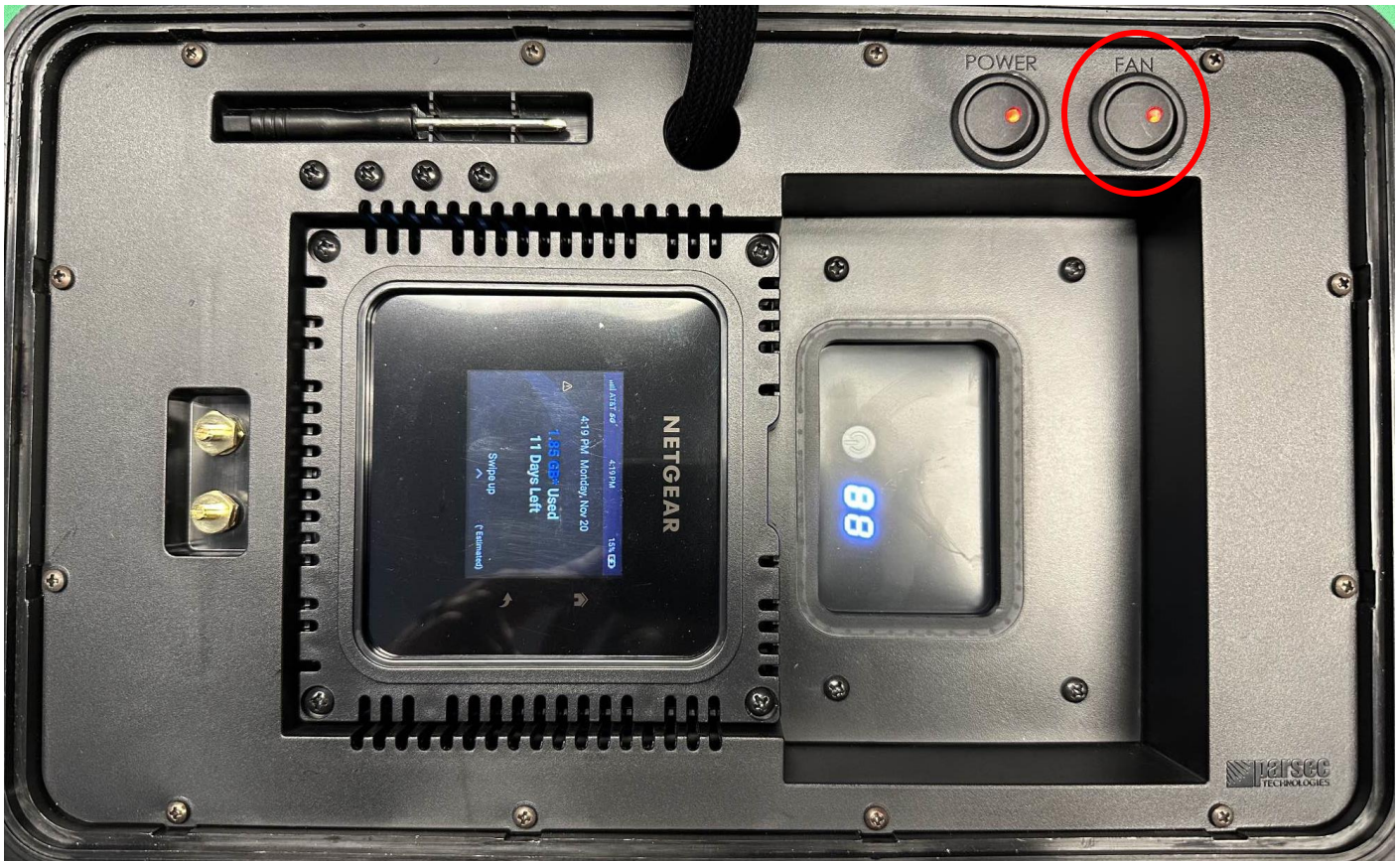
Step 1: Press the button highlighted to turn the battery on



Step 2: Flip the switch shown to charge the router



Step 3: Flip the switch shown to power the fan



Step 4: Open the fan and vent caps.

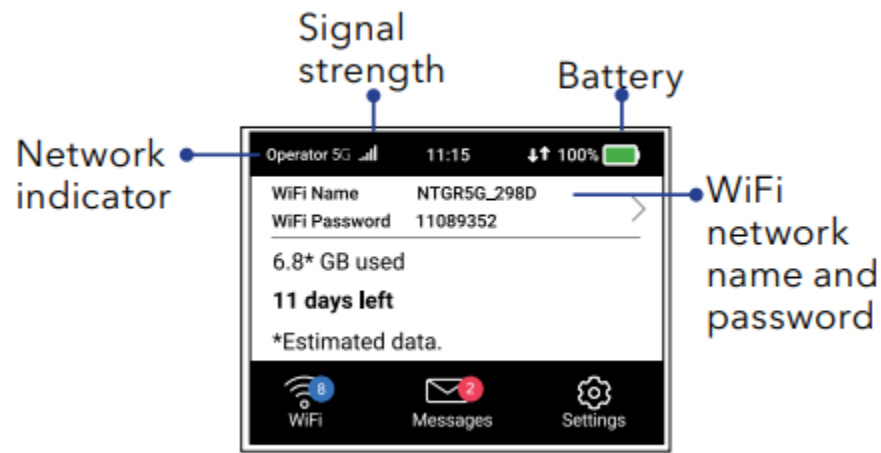
- A. Before turning the charger ON, always open the fan and vent caps. The type of cap may vary.
- B. **Ensure that the antenna is away from any liquids when the caps are open.**



Figure 14: Open the fan and vent caps.

Step 5: Press and hold the power button for two seconds to turn the router on and follow the onscreen instructions to customize the router settings.

Step 6: The Home screen displays the mobile router's Wi-Fi network name and password. The network indicator lets you know which wireless network you are connected to.



Antenna setup is complete!

For best antenna performance, operate the antenna with the lid closed and the case oriented with the lip on top.

If applicable, make sure the fan and vent caps are open while using the antenna.

Battery Operation and Safety Guidelines

- A. To manually power ON/OFF, press and hold the power button (located on the top of the unit) for 2 seconds. All LED lights/display should turn ON/OFF.
- B. Holding the power button for longer than 2 seconds will cause the battery pack to enter programming mode. To exit programming mode, turn the battery pack OFF and then ON again.
- C. Recharging the battery pack can be done with the included 45W PD charger and cable but can be charged using up to 65W.
- D. If no power draw is detected after 1 minute, the battery pack will shut OFF to conserve energy. While the unit is OFF, press and hold the power button until the display begins flashing. This activates continuous mode, and the entire unit will stay ON until manually turned OFF.
- E. While plugged in and charging, the battery pack will allow pass-through charging to continue powering any devices that are plugged in to the battery pack. To disable this function, press and hold the power button for 2 seconds while the battery pack is charging. Repeat to re-enable pass-through charging for all ports.
- F. Warning: if the battery pack exceeds a safe operating temperature due to insufficient ventilation or a high-temperature environment, the unit will automatically shut OFF.
- G. Keep out of reach of children.
- H. The product may become uncomfortable warm, reaching 140°F (60°C) under extended, high-power usage. While using the product, make sure to keep it away from materials that may be affected by high temperatures.
- I. Hold on carefully when inserting or removing a cable. Make sure not to force or bend cables when inserting them into the charging ports.
- J. Avoid inserting any foreign objects into the ports.
- K. Do not attempt to open, alter, or modify the unit.
- L. Do not use in temperatures over 100°F (40°C).
- M. Do not expose the product to wet conditions such as water, rain, or snow.
- N. Failure to follow these safety guidelines may cause personal injury and/or property damage to the product. It may also void the product warranty.



CAUTION

To comply with FOC RF Exposure requirements in section 1.1310 of the FCC Rules, antennas used with this device must be installed to provide a separation distance of at least 20 cm from all persons to satisfy RF exposure compliance.



DO NOT

- Operate the transmitter when someone is within 24 inches of the antenna
- Install the antenna or mast assembly on a windy day
- Install the mast close to power lines as it can cause serious injuries or death



WARNING

This document gives detailed instructions to install an antenna to the best of our knowledge. This document is for general information only. It cannot be used as a warranty. Parsec Technologies Inc. will not accept any liability for any damage caused by an antenna due to unknown variables.



Parsec Technologies

972-804-4600

support@parsec-t.com

Last Revised: 11-22-2023