

Product Spotlight

The Rottweiler

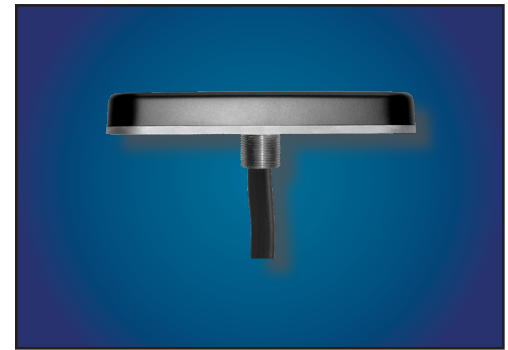


Contact Sales:
972-804-4600

ROTTWEILER – PRO SERIES ANTENNAS

MIMO LTE, GPS, Up to 3 WiFi, IP67-Rated Antenna
Vehicle mount antenna available in 5:1 or 6:1 configuration

The Rottweiler is a 5G, low-profile, high-performance, IP67-rated antenna specifically designed for Cradlepoint's IBR600/IBR900 routers and Sierra Wireless' LX60/MP70 routers. The Rottweiler's frequency range is from 600 MHz to 6 GHz, including the CBRS frequencies. It's perfect for FirstNet, first responders, critical communications, transportation/fleet, remote video monitoring, and mobile broadband. **Patent pending.**



The Rottweiler 6:1 Antenna
600 MHz to 6 GHz



Rottweiler on
2020 Ford
Explorer

WHAT'S NEW? - Ford Explorer Gasket

Parsec created a new gasket for the Rottweiler antennas that produces a water-tight fit between the ridges on the roof of a 2020 Ford Explorer.



This means that there is less vibration because there is no gap between the antenna and the vehicle.

LOW PROFILE ANTENNA COMPARISON

Parsec's Rottweiler vs. Panorama's Sharkee

Parsec's Rottweiler antenna outperforms its closest competitor, Panorama's Sharkee antenna in efficiency, gain and isolation at different frequency levels, and clearly beats out Panorama by a factor of 2:1 on band 14.



Rottweiler:
1.45" Tall x 8.5" Long



vs. Sharkee:
2.3" Tall x 4.7" Long

The Rottweiler beats Panorama by a 2:1 Margin (band 14) (Lab-Tested Results)

| Frequency (MHz) | Efficiency (%) | | | | Gain (dBi) | | | | Isolation (dB) | | | |
|-----------------|----------------|-----|------|------|------------|-----|------|------|----------------|-----|------|------|
| | 750 | 798 | 1710 | 2170 | 750 | 798 | 1710 | 2170 | 750 | 798 | 1710 | 2170 |
| Rottweiler | 60 | 70 | 85 | 85 | 2 | 3.0 | 8.9 | 5.5 | 10 | 14 | 18 | 19 |
| Sharkee | 40 | 40 | 20 | 35 | 0 | 1.3 | 4.7 | 1.2 | 11 | 12 | 13 | 12 |