



The Irish Setter Pro Series antenna is a 5G, 4X4 MIMO cellular, 2X2 MIMO Wi-Fi, omnidirectional antenna with optional GPS and Bluetooth. The Irish Setter is designed for high performance of 600 MHz to 6GHz frequencies ideal for kiosks, IoT, NEMA enclosures and more.

This PRO series, low profile, IP67 rated antenna is specifically designed to operate dual SIMs across two Irish Setters in the 4X4 configuration. Mount two antennas within 6 inches of one another on a kiosk or NEMA enclosure without interference. Parsec's patent pending technology allows uniform antenna patterns to send all bands in the same direction, producing the highest performance.

Patent Pending



1st
to
5G



Configurations 4:1 | 5:1 | 6:1 | 7:1 | 8:1

Emergency Communications | Remote Video Monitoring | Kiosk Systems

Dual SIM Capability

2 Irish Setters for Dual SIM Operations

Low Interference

Mount Within 6 Inches Without Interference

Durable

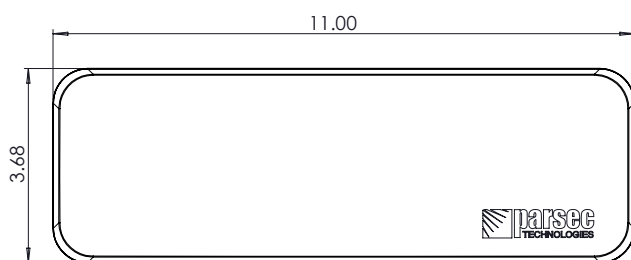
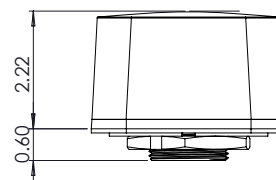
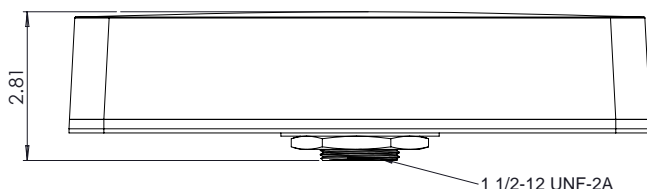
IP67 Rated & Power Wash Safe

- UP TO 4X4 MIMO CELLULAR
- UP TO 2X2 MIMO Wi-Fi
- OMNI-DIRECTIONAL
- OPTIONAL GPS/BLUETOOTH
- 600 MHz - 6 GHz
- 11 in X 3.68 in X 2.22 in
- Wi-Fi 6 COMPATIBLE

Specifications

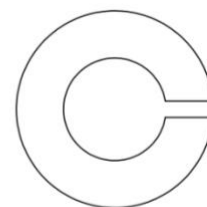
Frequencies			
4G/5G Cellular	617-894 MHz 1710-2700 MHz 3400-3800 MHz 5150-5925 MHz	Wi-Fi	2400-2483.5 MHz 4900-5900 MHz
4G/5G Bands			
North America	B2, B4, B5, B7, B12, B13, B14, B17, B25, B26, B29, B30, B41, B46, B48, B66, B71 n2, n5, n12, n25, n26, n41, n48, n66, n71, n77		
EMEA	B1, B3, B7, B20, B28, B42, B43, B46 n1, n3, n28, n77, n78		
Mechanical		Environmental	
Dimension	11 inch x 3.68 inch x 2.22 inch	Operating Temperature	-30 °C to 85°C OR -22 °F to 180°F
Mounting	Single 1.5 inch	Ingress Protection	IP67 Waterproof
RF Cable Length	Choice of 1, 3, or 15 ft cable		

Dimensions

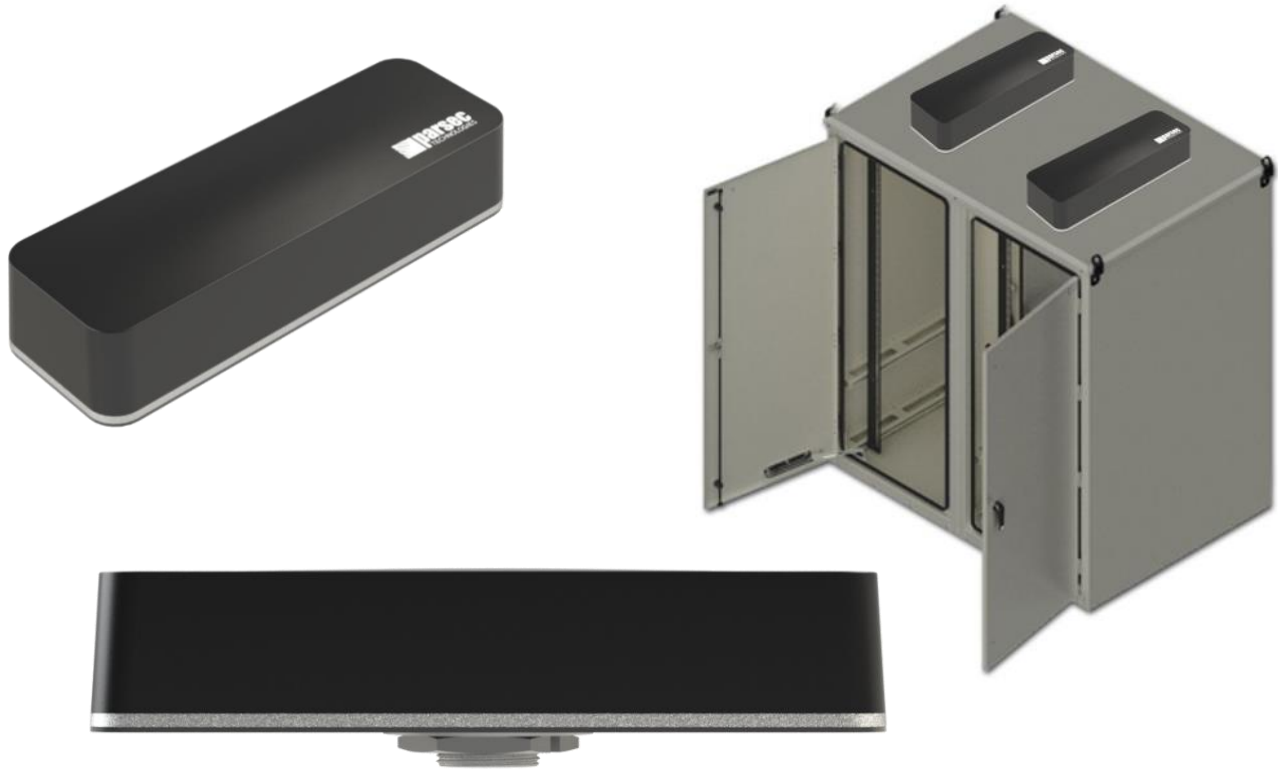


Hardware Accessories Included

PTA0761



Product Images



Electrical Specifications

<i>ID & Unit</i>	<i>Port</i>	<i>Parameters</i>	<i>Typ.</i>
Radiated Efficiency (%)	CELL 1, 2	617-894 MHz	80
	CELL 1, 2	1710-2700 MHz	85
	CELL 1, 2	3300-4000 MHz	70
	CELL 1, 2	5150-5925 MHz	60
	CELL 3, 4	617-894 MHz	50
	CELL 3, 4	1710-2700 MHz	75
	CELL 3, 4	3300-4000 MHz	70
	CELL 3, 4	5150-5925 MHz	70
	GPS	1575.42 MHz	80
	Wi-Fi 1, 2	2400-2483.5 MHz	70
	Wi-Fi 1, 2	4900-5900 MHz	70
Bluetooth	2400-2483.5 MHz	70	
Peak Gain (dBi)	CELL 1, 2	617-894 MHz	5
	CELL 1, 2	1710-2700 MHz	6
	CELL 1, 2	3300-4000 MHz	7
	CELL 1, 2	5150-5925 MHz	7

	CELL 3, 4	617-894 MHz	5
	CELL 3, 4	1710-2700 MHz	5
	CELL 3, 4	3300-4000 MHz	8
	CELL 3, 4	5150-5925 MHz	9
	Wi-Fi 1, 2	2400-2483.5 MHz	7
	Wi-Fi 1, 2	4900-5900 MHz	9
	Bluetooth	2400-2483.5 MHz	7
Return Loss 50Ω (dB)	CELL 1, 2	617-894 MHz	7
	CELL 1, 2	1710-2700 MHz	13
	CELL 1, 2	3300-4000 MHz	5
	CELL 1, 2	5150-5925 MHz	6
	CELL 3, 4	617-894 MHz	5
	CELL 3, 4	1710-2700 MHz	8
	CELL 3, 4	3300-4000 MHz	6
	CELL 3, 4	5150-5925 MHz	6
	GPS	1575.42 MHz	12
	Wi-Fi 1, 2	2400-2483.5 MHz	6
	Wi-Fi 1, 2	4900-5900 MHz	7.5
	Bluetooth	2400-2483.5 MHz	6
Isolation (dB)	CELL 1 to 2	617-894 MHz	20
	CELL 1 to 2	1710-2700 MHz	20
	CELL 1 to 2	3300-4000 MHz	28
	CELL 1 to 2	5150-5925 MHz	29
	CELL 3 to 4	617-894 MHz	6
	CELL 3 to 4	1710-2700 MHz	18
	CELL 3 to 4	3300-4000 MHz	20
	CELL 3 to 4	5150-5925 MHz	21
	Wi-Fi 1, 2	2400-2483.5 MHz	20
	Wi-Fi 1, 2	4900-5900 MHz	27
	Bluetooth	2400-2483.5 MHz	20
Polarization (dBi)	CELL, Wi-Fi, Bluetooth		Linear Linear
	GPS		RHCP
Max Input Power (Watts)	CELL		10
GNSS Preamp Gain (dB)	GPS		28
GNSS Preamp Voltage (V)	GPS		2.2 to 5.0
RF Connectors	CELL, GPS Wi-Fi, Bluetooth		SMA(M) RPSMA(M)
RF Cable Type	CELL, Wi-Fi, Bluetooth		LSR200 LSR200
	GPS		LSR100
<ul style="list-style-type: none"> • Electrical Specifications based on antenna with a 2 ft x 2 ft external ground plane. • Isolation, return loss, and peak gain do not include cable loss. 			

- SMA connectors have a max torque of 3–5 inch lbs.
- NF connectors have a max torque of 6.2–9.7 inch lbs.
- Parsec is currently phasing out inventory with LTE on our cellular cables (now labeled CELL). For cables labeled LTE, please refer port "CELL" in the data sheets and installation instructions.

Part Number Key

Part number example of a 8:1 Irish Setter antenna, black: PRO8IS4L2WBG15BS

<i>Description</i>	<i>Abbreviation</i>	<i>Part Number</i>
All PRO Series	PRO	PRO
Number of Antennas in Housing/Configuration	8:1	PRO8
Antenna Abbreviation for Irish Setter	IS	PRO8IS
Number of CELL Elements	#L	PRO84L
Number of Wi-Fi Elements	#W	PRO84L2W
Abbreviation for Bluetooth	B	PRO8IS4L2WB
Number of GPS Elements (usually only 1 GPS per antenna, therefore we simply list G and no number)	G	PRO8IS4L2WBG
Cable length measured in feet: 01=1', 15=15'	01, 15, etc.,	PRO8IS4L2WBG15
Radome color - B for Black	B	PRO8IS4L2WBG15B
1.25" bolt is standard, leave blank. Add S for short bolt, 0.6"	S	PRO8IS4L2WBG15BS
If SMA connector, simply leave blank		PRO8IS4L2WBG15BS
Custom connectors and cable kits are available. Please contact us for more information at sales@parsec-t.com.		

Ordering

Standard Antennas

<i>Configurations</i>	<i>Part Number</i>	<i>Description</i>
4:1	PRO4IS4L03BS	4 Cellular, 3 ft, Cable Black, Short Bolt
	PRO4IS4L15BS	4 Cellular, 15 ft, Cable Black, Short Bolt
7:1	PRO7IS4L2WG03BS	4 Cellular, 2 Wi-Fi, GPS, 3 ft Cable, Black, Short Bolt
8:1	PRO8IS4L2WBG03BS	4 Cellular, 2 Wi-Fi, Bluetooth, GPS, 3 ft Cable, Black, Short Bolt

Non-Standard Antennas

<i>Configurations</i>	<i>Part Number</i>	<i>Description</i>
4:1	PRO4IS4L01BS	4 Cellular, 1 ft Cable, Black, Short Bolt
	PRO4IS4L03BS	4 Cellular, 3 ft Cable, Black, Short Bolt
	PRO4IS4L15BS	4 Cellular, 15 ft Cable, Black, Short Bolt

5:1	PRO5IS4LG01BS	4 Cellular, GPS, 1 ft Cable, Black, Short Bolt
	PRO5IS4LG03BS	4 Cellular, GPS, 3 ft Cable, Black, Short Bolt
	PRO5IS4LG15BS	4 Cellular, GPS, 15 ft Cable, Black, Short Bolt
6:1	PRO6IS4L2W01BS	4 Cellular, 2 Wi-Fi, 1 ft Cable, Black, Short Bolt
	PRO6IS4L2W03BS	4 Cellular, 2 Wi-Fi, 3 ft Cable, Black, Short Bolt
	PRO6IS4L2W15BS	4 Cellular, 2 Wi-Fi, 15 ft Cable, Black, Short Bolt
7:1	PRO7IS4L2WG01BS	4 Cellular, 2 Wi-Fi, GPS, 1 ft Cable, Black, Short Bolt
	PRO7IS4L2WG03BS	4 Cellular, 2 Wi-Fi, GPS, 3 ft Cable, Black, Short Bolt
	PRO7IS4L2WG15BS	4 Cellular, 2 Wi-Fi, GPS, 15 ft Cable, Black, Short Bolt
8:1	PRO8IS4L2WBG01BS	4 Cellular, 2 Wi-Fi, Bluetooth, GPS, 1 ft Cable, Black, Short Bolt
	PRO8IS4L2WBG03BS	4 Cellular, 2 Wi-Fi, Bluetooth, GPS, 3 ft Cable, Black, Short Bolt
	PRO8IS4L2WBG15BS	4 Cellular, 2 Wi-Fi, Bluetooth, GPS, 15 ft Cable, Black, Short Bolt

Additional Hardware Accessories

<i>Accessory</i>	<i>Part Number</i>
Pole Mount Bracket	PTA0638
Customizable Pole Mount Bracket	PTA0640
Roof Mount Bracket Assembly with L Bracket	PTA0641
Magnetic boot mount - Black	PTA0329
Replacement Rooftop Gasket	PTA0542
Hardware Kit for 1.5" Shaft - Nut/Washer	PTA0761
1.5" Star Washer	PTA0257
Ground plane with adhesive back, 20in x 20in, can be cut to size	PTA0587
Surge Arrestor - SMA(F) to SMA(F)	PTA0476
Surge Arrestor - N(F) to N(M)	PTA0736
SMA Wrench, Key Chain	PTA0194
Service: Cable Sleeving (priced per ft)	Cable Sleeving



Parsec Antennas
972-804-4600
support@parsec-t.com