

BLOODHOUND G2/G3/L

Installation Instructions



Table of Contents

| | |
|---|----|
| Antenna Versions..... | 2 |
| Required Tools & Accessories | 3 |
| Battery Installation | 5 |
| Router Installation | 7 |
| Connection – Router can vary | 10 |
| Final Assembly..... | 22 |
| Operational Setup | 27 |
| Battery Operation and Safety Guidelines | 30 |

* Conditions apply



Antenna Versions

The Bloodhound case antenna comes in multiple versions with different features, listed below.

| Bloodhound G2 | Bloodhound G3 | Bloodhound L (08/2024) |
|---|---|---|
| <ul style="list-style-type: none"> • 3x RJ-45 Ports • USB-A Port • USB-C Port • AC Power Port • 2x 40mm Fans • Battery Operated – OmniCharge Ultimate+ Custom Battery, OP2FPA01 (battery not included) | <ul style="list-style-type: none"> • 4x RJ-45 Ports • USB-A Port • USB-C Port • IEC C14 Port • 2x 40mm Fans • Battery Operated – OmniCharge 20C+ Custom Battery, OP2CPA01 (battery not included) | <ul style="list-style-type: none"> • 3x RJ-45 Ports • USB-A Port • USB-C Port • AC Power Port • 2x 40mm Fans • Accessory Tray |
| Bloodhound G* | Bloodhound G1* | Bloodhound L (Pre-08/2024)* |
| <ul style="list-style-type: none"> • 4x RJ-45 Ports • USB-A Port • 60mm Fan • Battery Operated – Chargetech 54KmAh Battery (battery not included) | <ul style="list-style-type: none"> • 4x RJ-45 Ports • USB-A Port • 60mm Fan • Battery Operated – Chargetech 27KmAh Battery (battery not included) | <ul style="list-style-type: none"> • AC Power Port • 4x RJ-45 Ports • 40mm Fan |

* Please see the Bloodhound Installation Instructions on the Parsec Website

Required Tools & Accessories

The following tools (not provided) are required in for the installation of the Bloodhound case antenna:

- Philips Screwdriver
- 11/32" Wrench

The tables below list the required accessories for the G2, G3, and L versions of the Bloodhound case antenna.

| | Bloodhound G2 | Bloodhound G3 | Bloodhound L |
|-----------------------|--|--|---|
| Provided with Antenna | <ul style="list-style-type: none"> • PTA0351 Black Oval Head Screws with Washers, 21 pcs • PTA1037 Flat Head Screws, 4 pcs • PTA0399-TL Pan Head Screws, 3 pcs • PTA0164 Pan Head Screws, 8 pcs • PTA0957 Sticker Set, 1 pc • Ethernet Cords, 3 pcs * • USB-A Cord, 1 pc * • Battery Tray for OmniCharge Ultimate Battery Pack • PTA1062 Right-Angle 5-15P to 5-15R Cable, 1 pc • PTA1146 NEMA 5-15 Plug to 5-15 Socket, 6 FT*** • Cable Ties | <ul style="list-style-type: none"> • PTA0351 Black Oval Head Screws with Washers, 21 pcs • PTA1037 Flat Head Screws, 4 pcs • PTA0399-TL Pan Head Screws, 3 pcs • PTA0164 Pan Head Screws, 8 pcs • PTA0957 Sticker Set, 1 pc • Ethernet Cords, 3 pcs * • USB-A Cord, 1 pc * • Battery Tray for OmniCharge Ultimate Battery Pack • Cable Ties | <ul style="list-style-type: none"> • PTA0351 Black Oval Head Screws with Washers, 21 pcs • PTA1037 Flat Head Screws, 4 pcs • PTA0164 Pan Head Screws, 8 pcs • PTA0957 Sticker Set, 1 pc • PTA0414 Surge Protector, 1 pc • Ethernet Cords, 3 pcs * • USB-A Cord, 1 pc * • PTA1146 NEMA 5-15 Plug to 5-15 Socket, 6 FT*** • Cable Ties |

| | Bloodhound G2 | Bloodhound G3 | Bloodhound L |
|-----------------------------|---|--|--|
| To be Purchased By Customer | <ul style="list-style-type: none"> • PTA1182 OmniCharge Ultimate+ Custom Battery Pack (OP2FPA01) • USB-A Cord ** • Ethernet Cords, 3 pcs ** | <ul style="list-style-type: none"> • PTA1180 OmniCharge 20C+ Custom Battery Pack (OP2CPA01) • 65W GaN Charger for OmniCharge Battery • USB-A Cord ** • Ethernet Cords, 4 pcs ** | <ul style="list-style-type: none"> • Ethernet Cords, 3 pcs ** |
| | <ul style="list-style-type: none"> • Router Options <ul style="list-style-type: none"> ○ Cradlepoint R1900 ○ Sierra Wireless XR80 ○ Peplink MAX BR1 Pro 5G ○ Peplink MAX BR2 Pro 5G • Router Power Supplies <ul style="list-style-type: none"> ○ For the R1900 Router, 12V 2x2 Power Supply (Cradlepoint #170869-000) with C7 Line Cord (Cradlepoint #170623-001) ○ For Peplink MAX BR1 Pro 5G and MAX BR2 Pro 5G, 12V 3A 4-Pin Power Supply (Peplink #ACW-663) | | |

* For connecting the router to the ports on the case

** Optional, for connecting external devices to the case, length as required by customer

*** For connecting to NEMA 5-15P outlet on case

Battery Installation

Step 1: Mount the OmniCharge Ultimate Battery Pack to the Cover Plate (**Bloodhound G2 only**).

- A. This step only applies to the Bloodhound G2.
- B. Cut and remove the flaps from the sides of the battery pack, shown in Figure 1.
- C. Insert the battery pack into the battery tray, as shown in Figure 2.
- D. Secure the Battery Tray with the Qty. 3 PTA0399-TL screws, as shown in Figure 3.



Figure 1: Remove the flaps from the sides of the battery.



Figures 2-3: Insert the battery pack into the battery tray and secure the Battery Tray.

Step 1: Mount the OmniCharge 20K Battery Pack to the Cover Plate (**Bloodhound G3 only**).

- A. This step only applies to the Bloodhound G3.
- B. Insert the battery pack into the battery tray, as shown in Figure 3.
- C. Secure the Battery Tray with the Qty. 3 PTA0399-TL screws, as shown in Figure 4.



Figures 3-4: Insert the battery pack into the battery tray and secure the Battery Tray.

Router Installation

Step 2: Mount the router to the cover plate (Bloodhound G2, Bloodhound G3, Bloodhound L).

- A. Remove the Router Plate from the Cover Plate Assembly as shown in Figure 5 to be able to easily install the router to the Router Plate.
- B. For the R1900, BR1, and BR2 Routers, mount the router using the four PTA1037 screws provided in the kit, as shown in Figures 6–8:



Figure 5: Remove the Router Plate from the Cover Plate

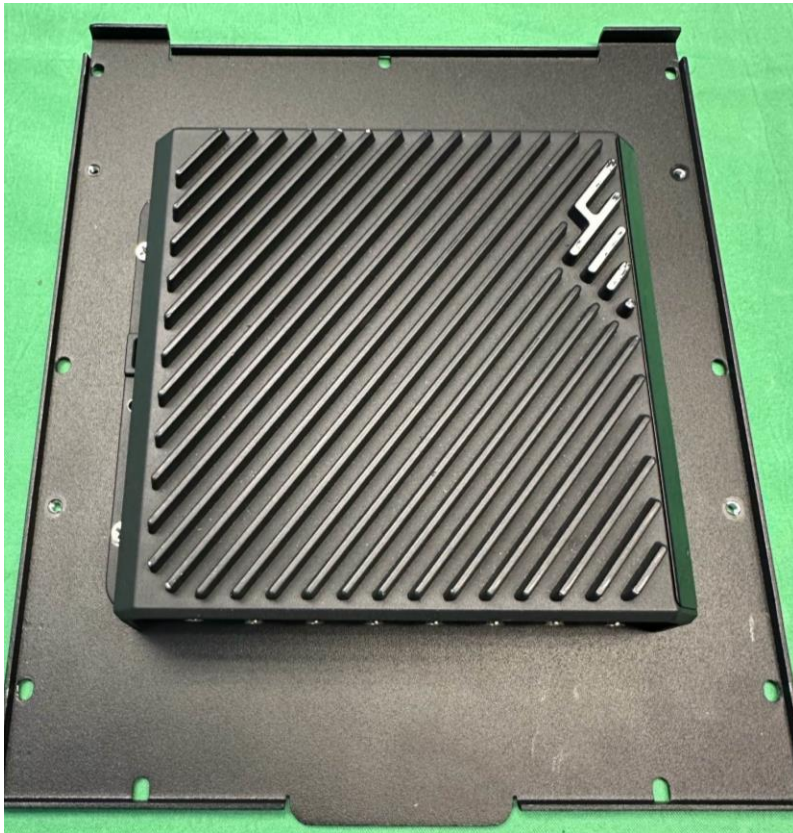


Figure 6: Cradlepoint R1900 Router installed on Router Plate

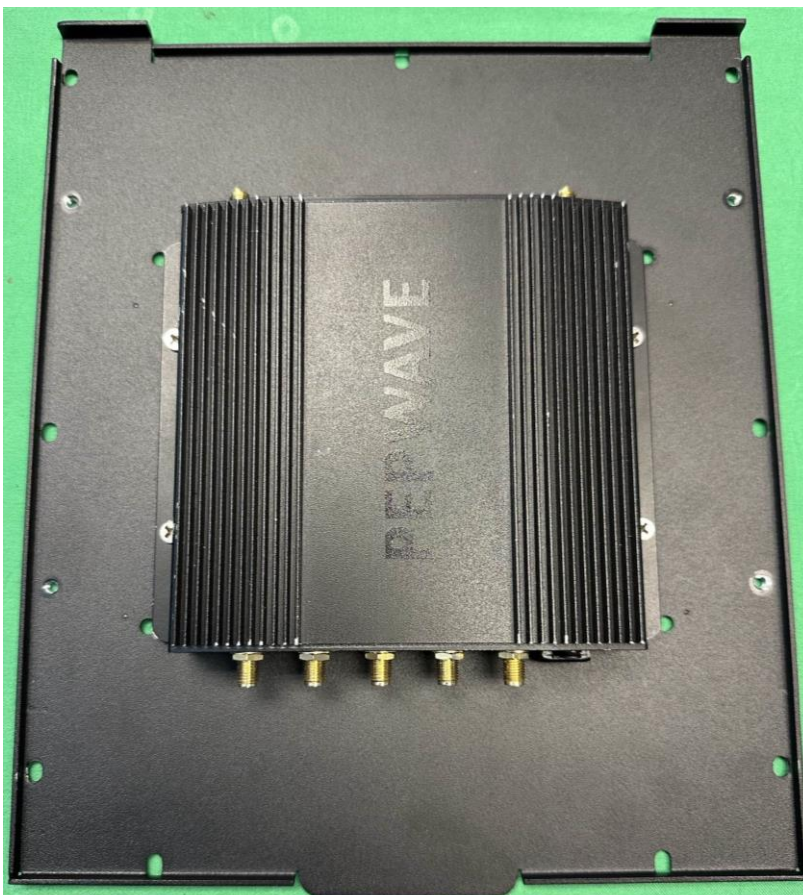


Figure 7: Peplink BR1 Max Pro 5G Router installed on Router Plate



Figure 8: Peplink BR2 Max Pro 5G Router installed on Router Plate

Connection – Router can vary



Figure 10: Connection Diagram for Bloodhound G2

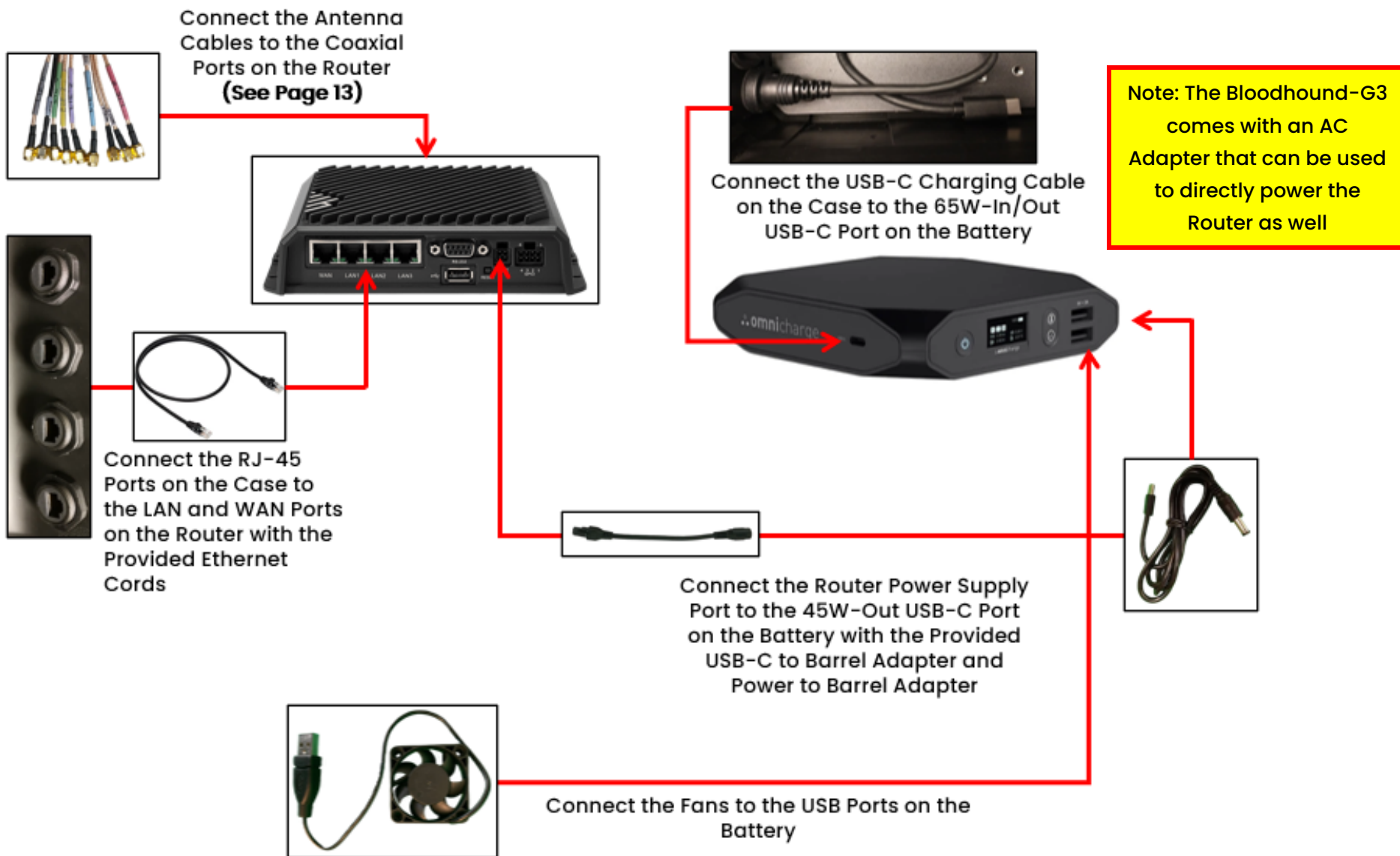


Figure 11: Connection Diagram for Bloodhound G3

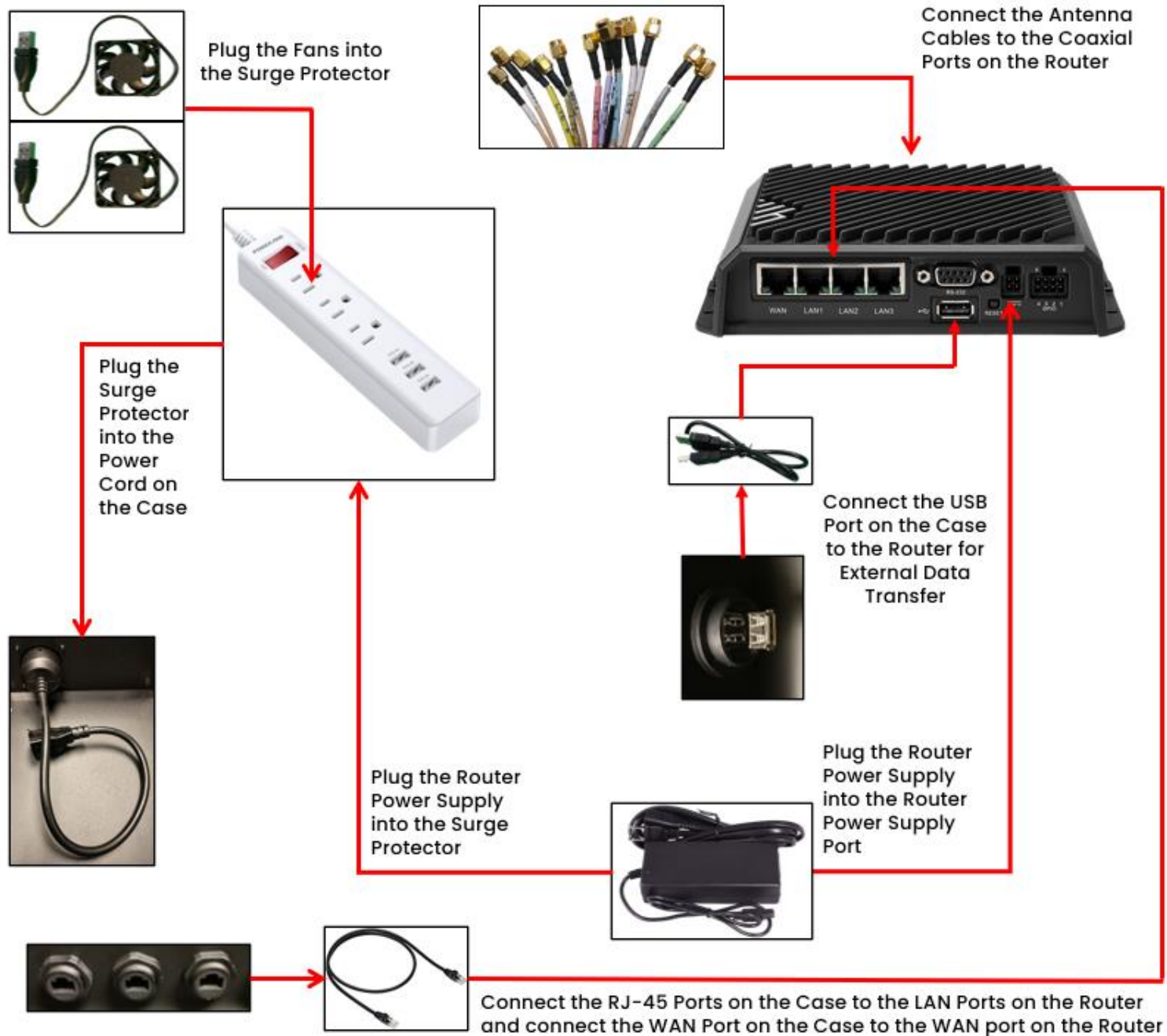


Figure 12: Connection Diagram for Bloodhound L

Step 1: Connect the antenna cables to the router.

- A. Use canned air or isopropyl alcohol to clean all the connectors to ensure that there is no dust in the terminals.
- B. Connect the antenna cables to the designated terminals on the router, as shown in the tables and images below.

| Cradlepoint R1900 | |
|-------------------|-----------------|
| Antenna Cable | Router Terminal |
| CELL 1 | MAIN |
| CELL 2 | DIV |
| CELL 3 | MIMO1 |
| CELL 4 | MIMO2 |
| CELL 5 | MAIN 0 on modem |
| CELL 6 | AUX 0 on modem |
| CELL 7 | MAIN 1 on modem |
| CELL 8 | AUX 1 on modem |
| GPS | GNSS |
| Wi-Fi 1 | 2.4/5GHz WIFI 1 |
| Wi-Fi 2 | 2.4/5GHz WIFI 2 |
| Bluetooth | BT |

| Peplink MAX BR2 Pro 5G | |
|------------------------|-----------------|
| Antenna Cable | Router Terminal |
| CELL 1 | Cellular 1A |
| CELL 2 | Cellular 1B |
| CELL 3 | Cellular 1C |
| CELL 4 | Cellular 1D |
| CELL 5 | Cellular 2A |
| CELL 6 | Cellular 2B |
| CELL 7 | Cellular 2C |
| CELL 8 | Cellular 2D |
| GPS | GPS |
| Wi-Fi 1 | Wi-Fi A |
| Wi-Fi 2 | Wi-Fi B |

| Peplink MAX BR1 Pro 5G | |
|------------------------|-----------------|
| Antenna Cable | Router Terminal |
| CELL 1 | Cellular A |
| CELL 2 | Cellular B |
| CELL 3 | Cellular C |
| CELL 4 | Cellular D |
| GPS | GPS |
| Wi-Fi 1 | Wi-Fi Antenna A |
| Wi-Fi 2 | Wi-Fi Antenna B |

| Sierra Wireless XR80 | |
|----------------------|-----------------|
| Antenna Cable | Router Terminal |
| CELL 1 | Cellular 1 |
| CELL 2 | Cellular 2 |
| CELL 3 | Cellular 3 |
| CELL 4 | Cellular 4 |
| GPS | GNSS |
| Wi-Fi 1 | Wi-Fi 1 |
| Wi-Fi 2 | Wi-Fi 2 |
| Wi-Fi 3 | Wi-Fi 3 |
| Wi-Fi 4 | Wi-Fi 4 |

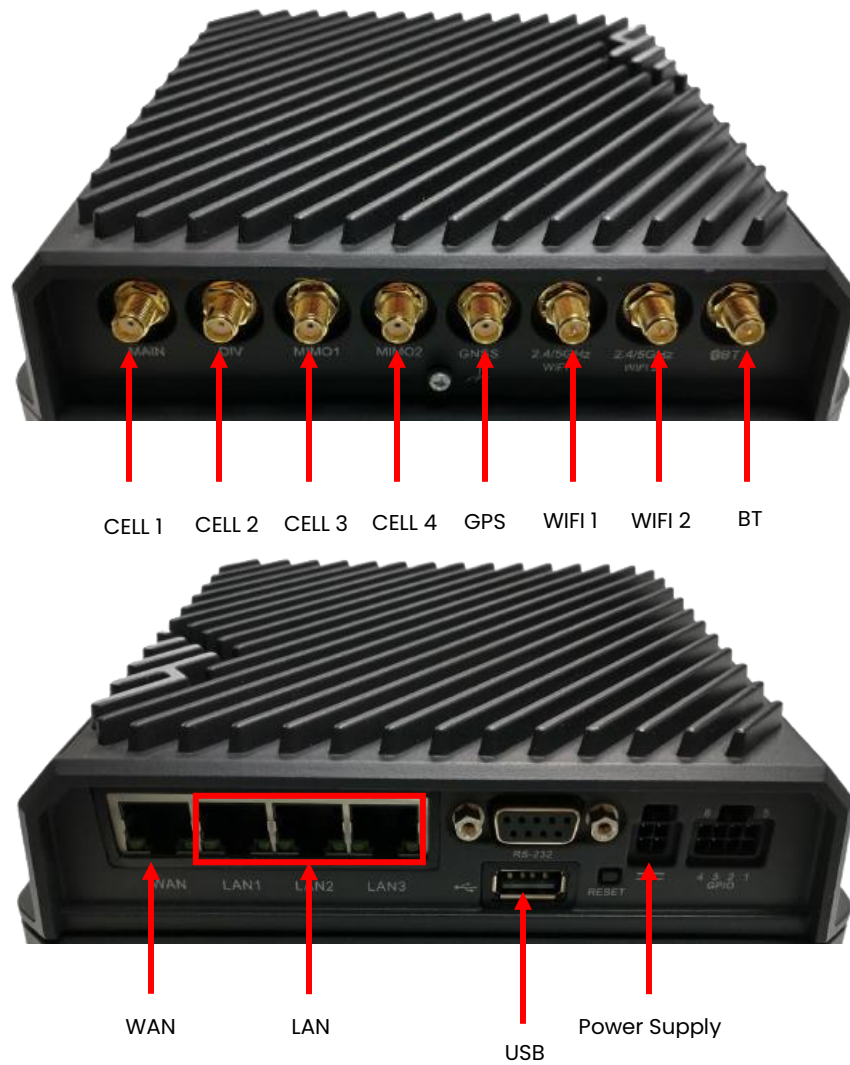


Figure 13: Cradlepoint R1900 Connections

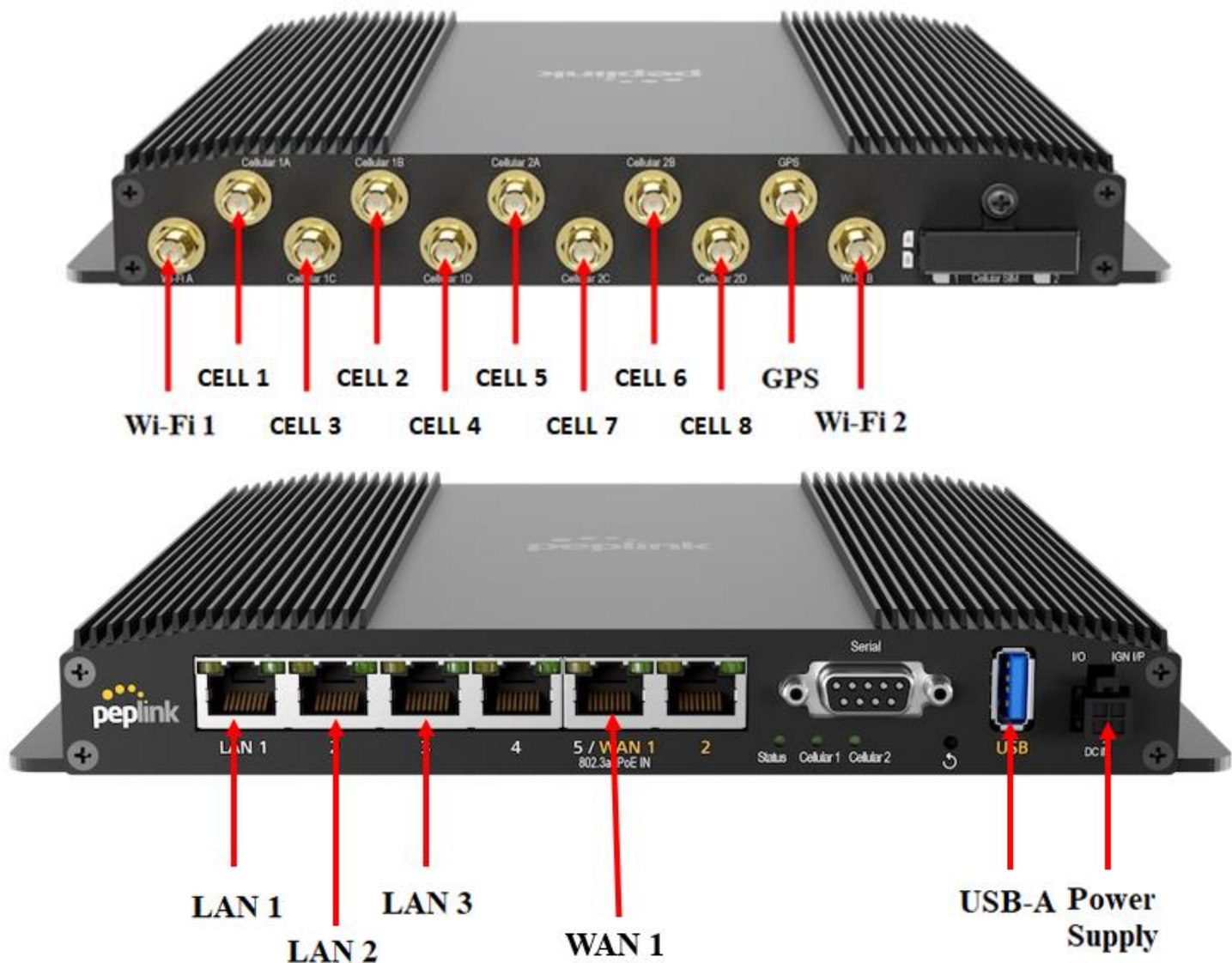


Figure 14: Peplink MAX BR2 Pro 5G Connections

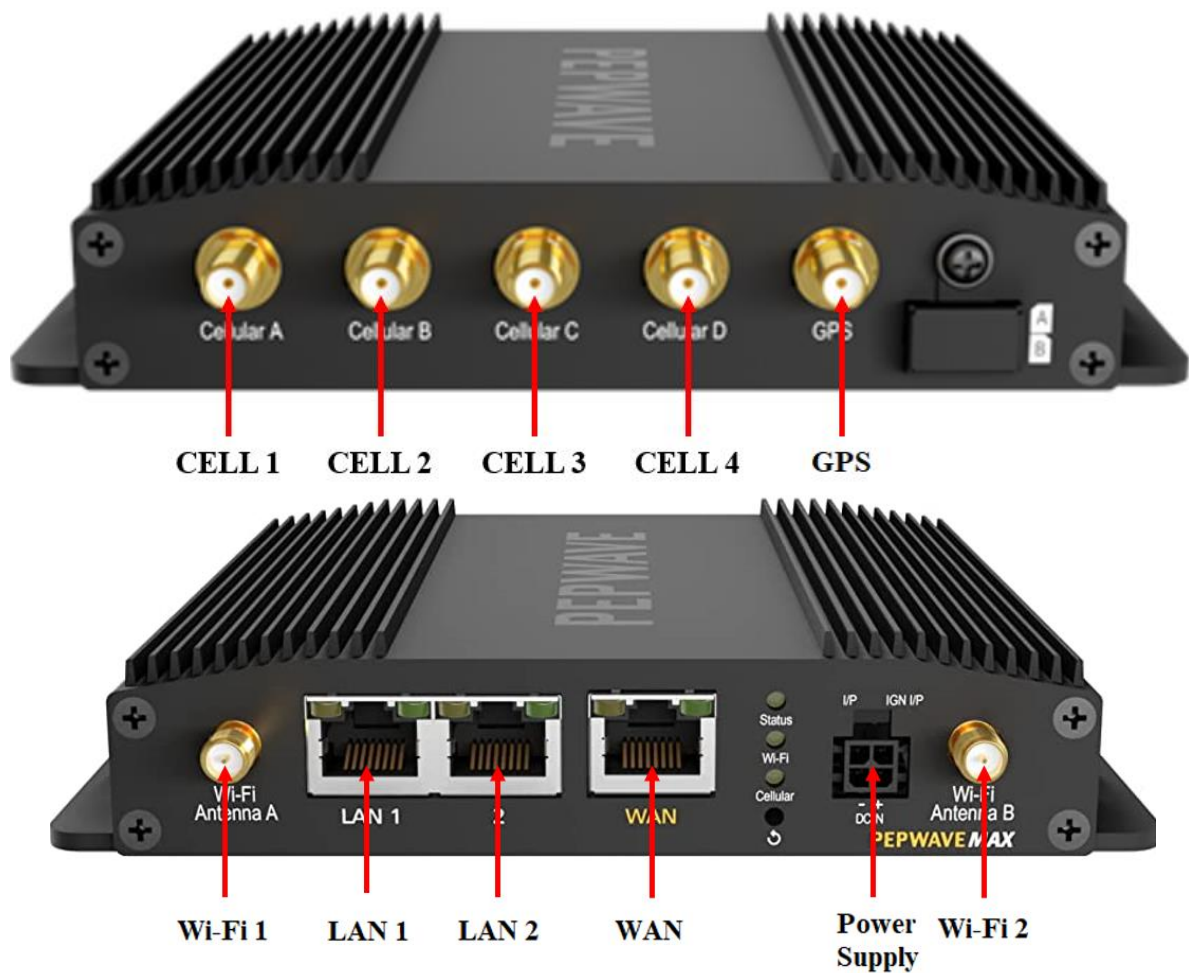


Figure 15: Peplink MAX BR1 Pro 5G Connections

Step 2: Connect the power supply to the router.

- A. For the R1900, BR1, and BR2, connect the router power supply to the power supply port on the router, shown in Figures 13, 14 & 15.
- B. For the **Bloodhound G2**:
 - I. Plug the PTA1062 Right-Angle Power Cable into the Battery shown in Figure 17.
 - II. Plug the router power supply to the Right-Angle Power Cable.
 - III. Secure the Right-Angle Power Cable on the Battery using Qty. 2: 10" Zip Ties and Zip Tie Adhesives, as shown in Figure 18.



Figure 17: Omnicharge Ultimate Battery Pack Connections (Left Side).



Figure 18: Secure the Right-Angle Power Cable to the Omnicharge Ultimate Battery Pack

C. For the **Bloodhound G3**:

- I. Connect the power to barrel adapter to the router power supply port and to the USB-C to barrel adapter.
- II. Connect the USB-C to barrel adapter to the Power Adapter and plug in the Power Adapter to the Battery, as shown in Figure 19.

D. For the **Bloodhound L**:

- I. Plug the router power supply to the Surge Protector shown in Figure 20.
- II. Use cable ties or hook-and-loop straps to secure the router power supply to the surge protector.

E. Use cable ties and hook-and-loop straps to secure the router power supply to the bottom plate on the Case.



Figure 19: Omnicharge 20k Battery Pack Connections (Right Side).

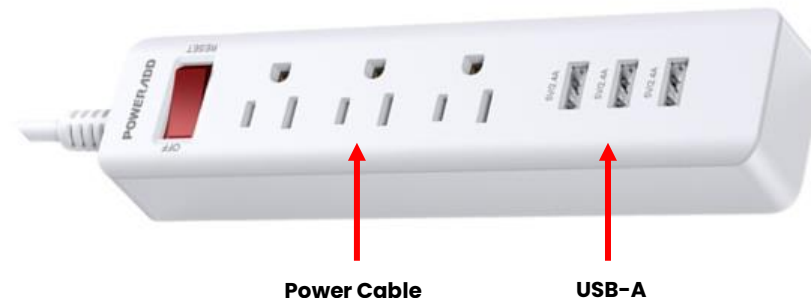


Figure 20: Surge Protector Connections

Step 3: Connect the fan to the surge protector or to the battery.

A. For the **Bloodhound G2**:

- I. Plug the fan power cords into the USB-A ports on the battery, shown in Figure 21.

B. For the **Bloodhound G3**:

- I. Plug the fan power cords into the USB-A ports on the battery, shown in Figure 22.

C. For the **Bloodhound L**:

- I. Plug the fan power cords into the surge protector ports, shown in Figure 20.



Figure 21: Omnicharge Ultimate Battery Pack Connections (Right Side).



Figure 22: Omnicharge 20k Battery Pack Connections (Left Side).

Step 4: Connect the router to the RJ-45 ports on the case using ethernet cords.

- A. Connect the provided ethernet cords to the LAN and WAN ports on the router, shown in Figures 13, 14, and 15.
- B. Connect the other ends of the ethernet cords from the router to the RJ-45 ports on the case. Keep track of which cord is connected to the WAN port on the router. Consider connecting the WAN port on the router to the front RJ-45 port and the LAN ports on the router to the back two RJ-45 ports, as shown in Figure 23.



Figure 23: Connect the router to the RJ-45 ports on the case using ethernet cords.

Step 5: Connect the USB-A port on the case to the Router.

- A. Connect one end of the provided USB-A cord into the USB-A port on the case.
- B. For transferring data to external devices, connect the other end of the USB-A cord into the USB-A port on the router, shown in Figures 13, 14, and 15.

Step 6: Connect the USB-C Cable on the case to the charging port on the Battery (Bloodhound G2/G3 only):

- A. Close the cover plate halfway and install the USB-C cable to the charging port on the battery, as shown below in Figure 24:



Figure 24: Charging cable connection

Step 7: Install the Panel Mount Stickers on the outside of the case.

- A. Use the PTA0957 Sticker Sheet shown in Figure 25 to label the RJ-45/Ethernet, USB-C, USB-A, and AC Power Panel Mounts, as shown in Figures 26-27.

| | |
|-------|----------|
| LAN 1 | AC Power |
| LAN 2 | DATA |
| LAN 3 | USB-C |
| LAN 4 | USB-A |
| WAN | DC Power |

Figure 25: Panel Mount Sticker Sheet



Figure 26: Right Side of the Bloodhound G2/G3/L Case with Stickers installed



Figure 27: Left Side of the Bloodhound G2/G3/L Case with Stickers installed

Final Assembly

Step 1: Make sure all the cables and devices are properly connected.

- A. Inspect every cable connection and ensure that no connections are loose.
- B. Use cable ties or other wire management to neatly bundle the cables **as shown below**. Ensure that the Antenna Cables are divided into two segments, as shown below, to ensure they do not press against the Power Adapter.

Note: Ensure that the antenna cables are not excessively bent ($1/2''$ minimum bend radius).



Figure 28: Fully Connected 13-in-1 Bloodhound G2 with Cradlepoint R1900 Router



Figure 29: Fully Connected 13-in-1 Bloodhound G2 with Peplink MAX BR2 Pro Router

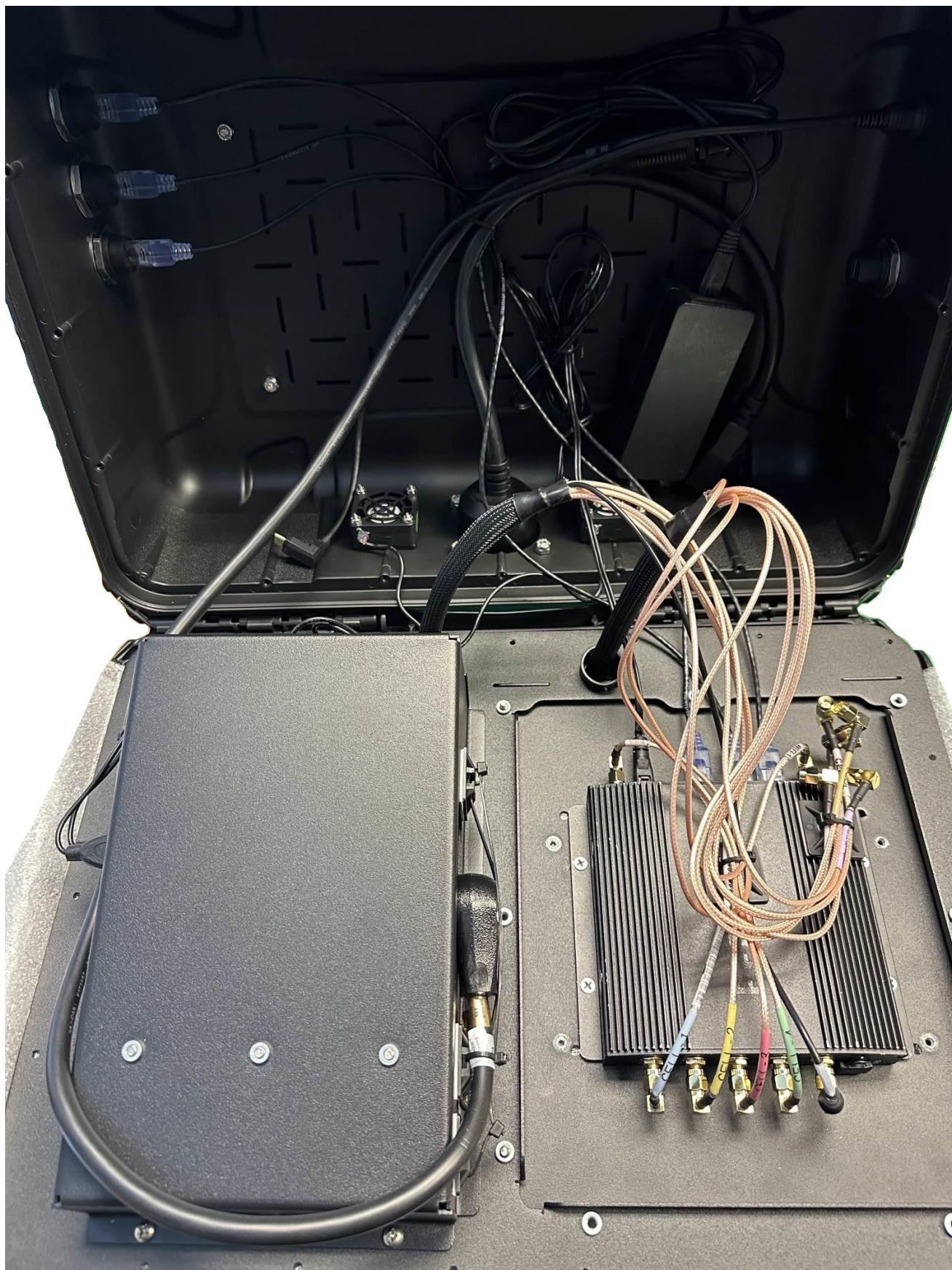


Figure 30: Fully Connected 13-in-1 Bloodhound G2 with Peplink MAX BR1 Pro Router

Step 2: Fasten the cover plate to the case.

- A. Place the cover plate onto the bottom half of the case. **Ensure that no cables are pinched between the cover plate and the case.**
 - I. Fasten the cover plate to the case using the Qty. 21: PTA0351 black oval head screws with washers provided in the kit, as shown in Figure 40.

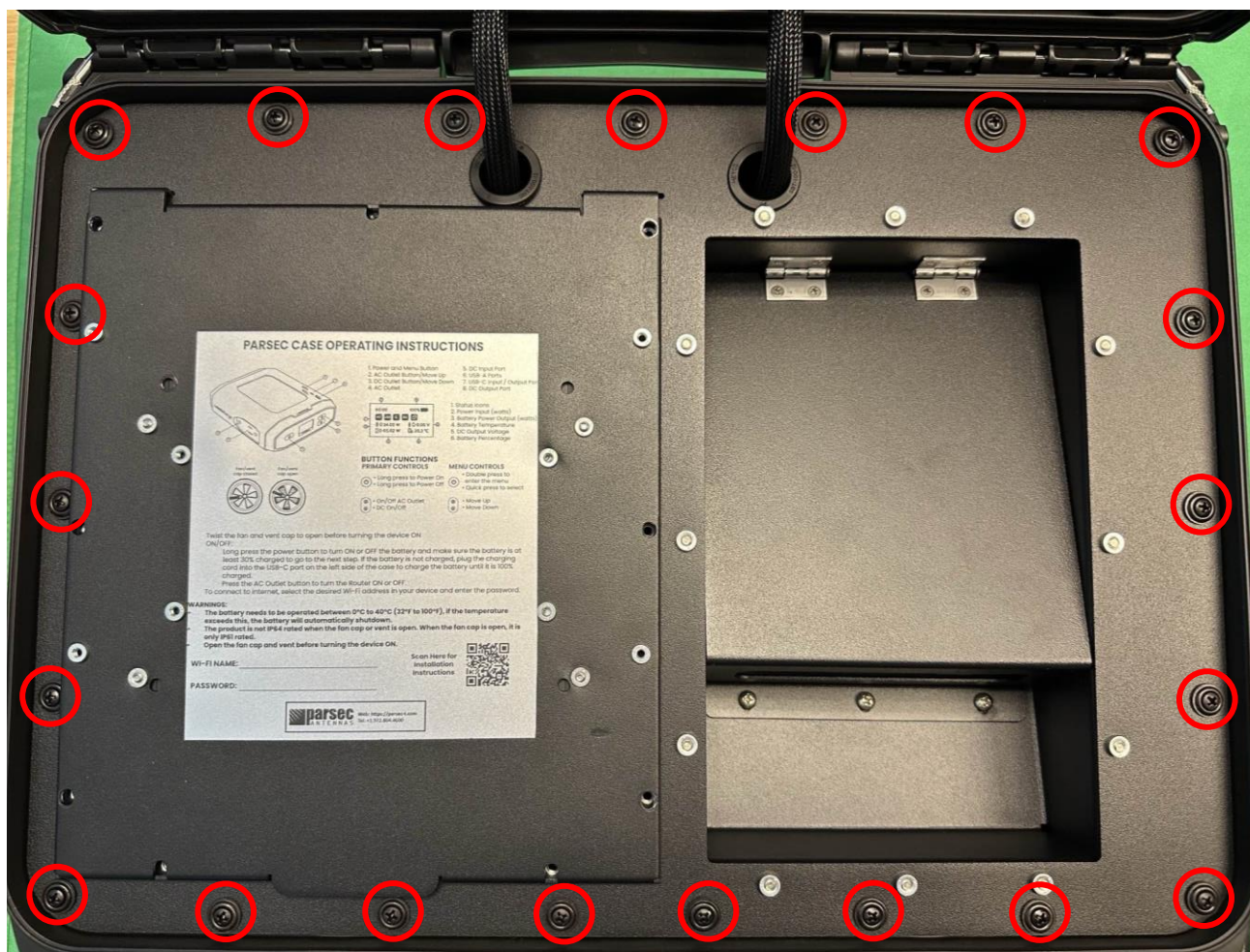


Figure 40: Fasten the cover plate to the case using PTA0351 screws.

Step 3: Fasten the router plate to the case.

- A. Fasten the router plate to the cover plate using the Qty. 8: PTA0164 Pan Head Screws. A minimum of Qty. 4 is recommended to secure the router plate:

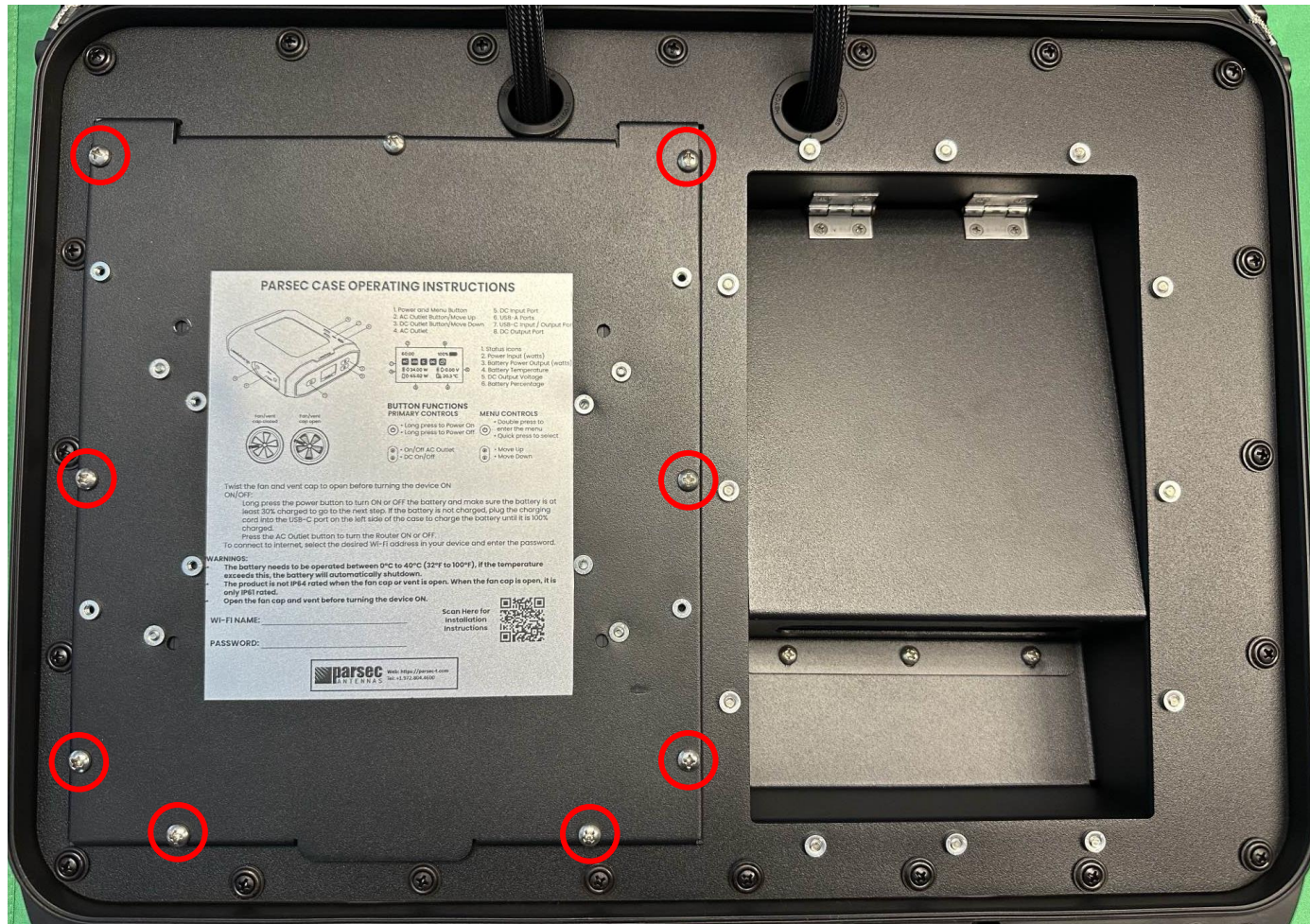


Figure 41: Fasten the router plate to the cover plate using PTA0164 screws.

Operational Setup

Step 1: Open the fan and vent caps.

- A. Before turning the antenna ON, always open the fan and vent caps. The type of cap may vary.
- B. **Ensure that the antenna is away from any liquids when the caps are open.**



Figure 42: Open the fan and vent caps.

Step 2: Power on the router.

- A. Connect the power cable to a power outlet and confirm the router has turned on.

Step 3: Connect the router to a computer.

- A. Use an ethernet cable to connect a computer to one of the LAN ports on the router.

| Router | Page |
|-------------|-----------------|
| Cradlepoint | Step 4, Page 27 |
| Peplink | Step 5, Page 29 |

Step 4: Login to Cradlepoint NetCloud.

- A. This step only applies for Cradlepoint Routers.
- B. Open a web browser on the computer and type 192.168.0.1 into the address bar. This will bring up the Cradlepoint NetCloud login, shown in Figure 43.
- C. Login to Cradlepoint NetCloud. The username is “admin”, and the password is found on the router, shown in Figure 44.

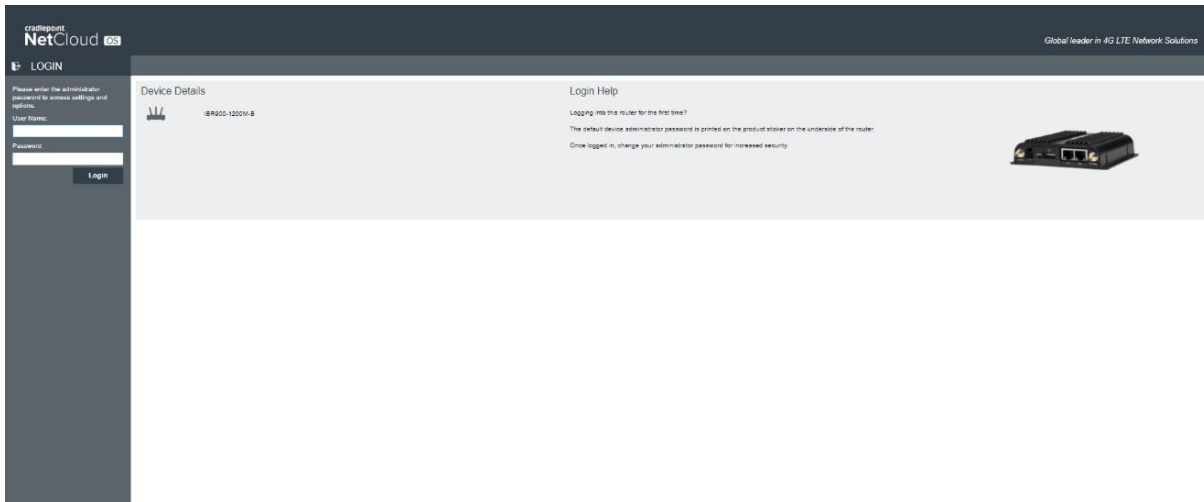


Figure 43: Access Cradlepoint NetCloud.



Figure 44: Cradlepoint NetCloud Login Password

Step 5: Login to PEPWAVE.

- D. This step only applies for Peplink Routers.
- A. Open a web browser on the computer and type 192.168.50.1 into the address bar. This will bring up the PEPWAVE, shown in Figure 45.
- B. Login to PEPWAVE. The username is "admin", and the password is "admin".

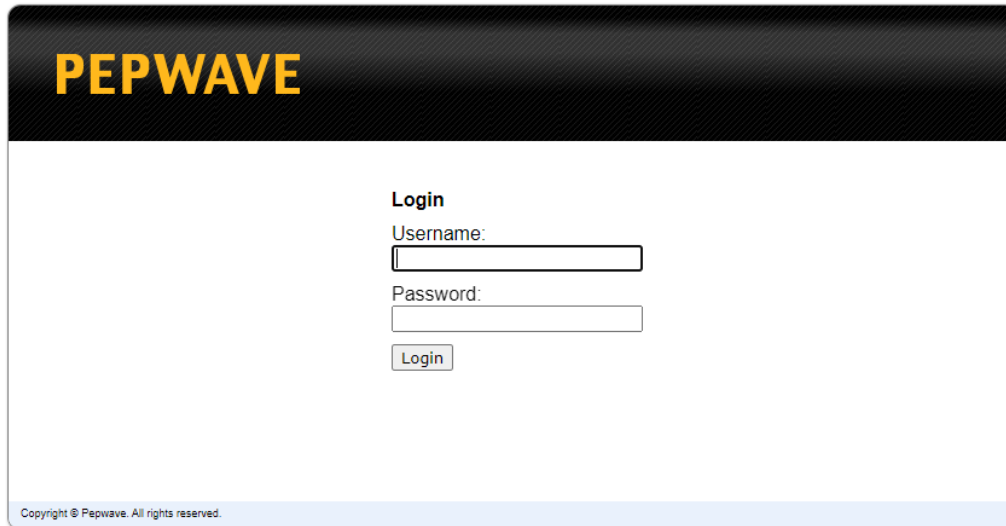



Figure 45: Access PEPWAVE.

Antenna setup is complete!

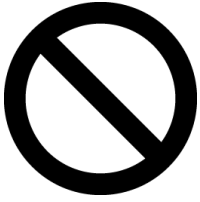
For best antenna performance, operate the antenna with the lid closed and the case oriented with the lip on top.

Make sure the fan and vent caps are open while using the antenna.

Battery Operation and Safety Guidelines

- A. To manually power ON/OFF, press and hold the power button  for 3 seconds. All LED lights/display should turn ON/OFF.
- B. Make sure the battery is at least 30% charged before operating. If the battery is not charged, charge the battery using the USB-C Port on the Case.
- C. Recharging the battery pack can be done with a Type-C PD Charger with at least 45W of power and up to 65W maximum.
- D. While plugged in and charging, the battery pack will allow pass-through charging to continue powering any devices that are plugged in to the battery pack.
- E. The battery will automatically shut off after 12 hours, regardless of user input.
- F. Warning: if the battery pack exceeds a safe operating temperature due to insufficient ventilation or a high-temperature environment, the unit will automatically shut OFF.
- G. **Keep out of reach of children.**
- H. **The product may become uncomfortably warm, reaching 104°F (40°C) under extended, high-power usage. While using the product, make sure to keep it away from materials that may be affected by high temperatures.**
- I. **Hold on carefully when inserting or removing a cable. Make sure not to force or bend cables when inserting them into the charging ports.**
- J. **Avoid inserting any foreign objects into the ports.**
- K. **Do not attempt to open, alter, or modify the unit.**
- L. **Do not operate in temperatures under 50°F (10°C) or over 104°F (40°C).**
- M. **Do not expose the product to wet conditions such as water, rain, or snow.**
- N. **Failure to follow these safety guidelines may cause personal injury and/or property damage to the product. It may also void the product warranty.**

Disclaimer



CAUTION

To comply with FOC RF Exposure requirements in section 1.1310 of the FCC Rules, antennas used with this device must be installed to provide a separation distance of at least 20 cm from all persons to satisfy RF exposure compliance.



DO NOT:

- Do not operate the transmitter when someone is within 24 inches of the antenna
- Do not install the antenna or mast assembly on a windy day
- Do not install the mast close to power lines as it can cause serious injuries or death



WARNING

This document is for general information only. It cannot be used for a warranty. Performance and other data contained were obtained in internal lab tests under ideal conditions, and performance may vary due to network variables, different network environments and other conditions. Parsec Technologies Inc. will not accept any liability for any damage caused by an antenna due to unknown variables. Parsec Technologies Inc. reserves the right to change, modify, transfer, or otherwise revise this publication without notice, and the most current version of the publication will be applicable.

Support Contact & Version



Parsec Technologies
972-804-4600
support@parsec-t.com

Last Revised: 05.05.2025