



The Chow PTA series antenna is a 5G, 2X2 MIMO cellular, omni-directional antenna optimized for C-Band to provide excellent efficiency in a minimalistic design. This high-performance antenna is perfect for future proofing any factory automation, IoT application, retail, or enterprise.

This PTA series IP54 rated antenna has a compact wall mount that can be installed indoors, outdoors and by pole mount.

Patent Pending



Configurations 2:1

Factory Automation | IoT Applications | Retail Enterprise

Future Proof

Features 5G & C-Band

Compact Aesthetic Design

Subtle for Retail & Enterprise

Durable

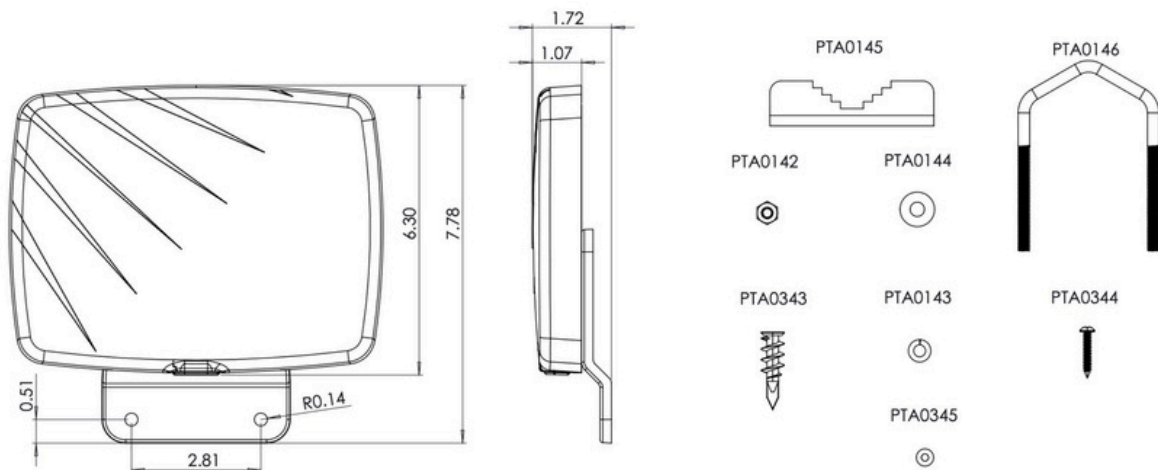
IP54 Rated for Indoor/Outdoor Use

- 2X2 MIMO CELLULAR
- OMNI-DIRECTIONAL
- 600 MHz - 6 GHz
- INDOOR/ OUTDOOR
- WALL OR POLE MOUNT
- 8.13 in X 7.78 in X 1.72 in

Specifications

Frequencies			
4G/5G Cellular		617-894 MHz 1710-2700 MHz 3300-4000 MHz 5150-5925 MHz	
4G/5G Bands			
North America	B2, B4, B5, B7, B12, B13, B14, B17, B25, B26, B29, B30, B41, B46, B48, B66, B71 n2, n5, n12, n25, n26, n41, n48, n66, n71, n77		
EMEA	B1, B3, B7, B20, B28, B42, B43, B46 n1, n3, n8, n77, n78		
Mechanical		Environmental	
Dimensions	8.13 inch X 7.78 inch X 1.72 inch thickness excluding mounting bracket	Operating Temperature	-30 °C to 85°C OR -22 °F to 180°F
Mounting	Bracket with screws to a non-metallic surface. Pole mount for 1.5-2.5 inch mast diameter	Ingress Protection	IP54
RF Cable Length	Choice of 1 or 15 ft cables		
<ul style="list-style-type: none">Pole mount consists of V-bolt, saddle clamp, and related hardware.Optional 25 ft LSR240 and 50 ft LSR400 cable kits are available.			

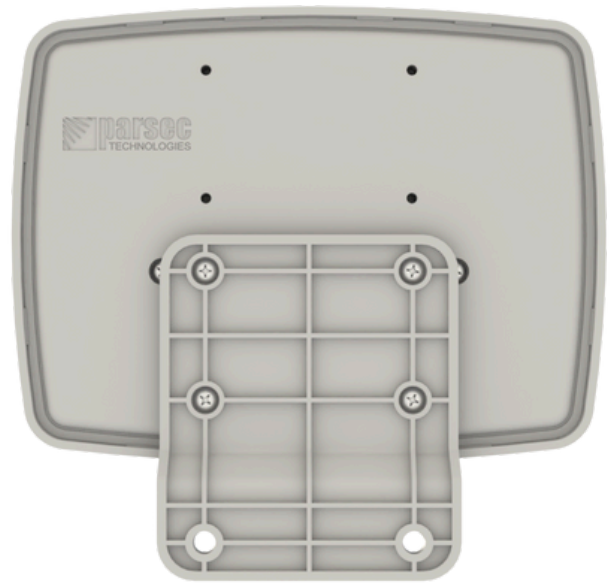
Dimensions



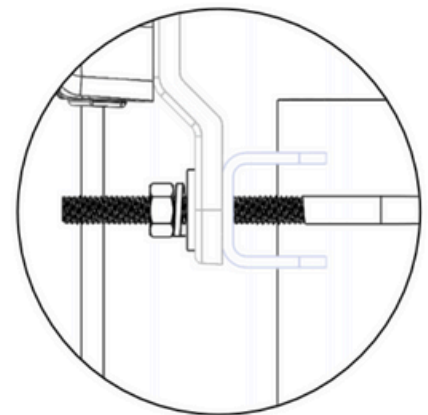
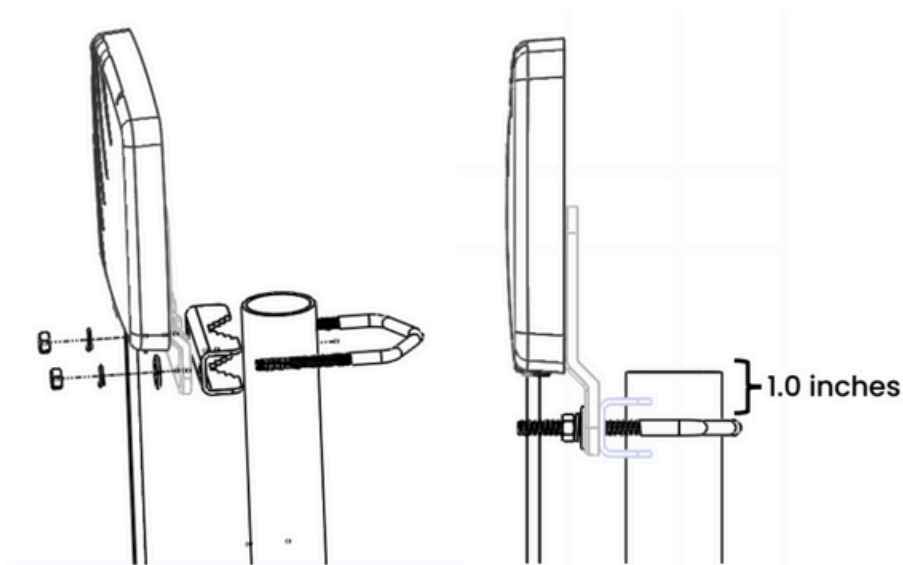
Standard Version

Product Images

Wall Mount



Pole Mount

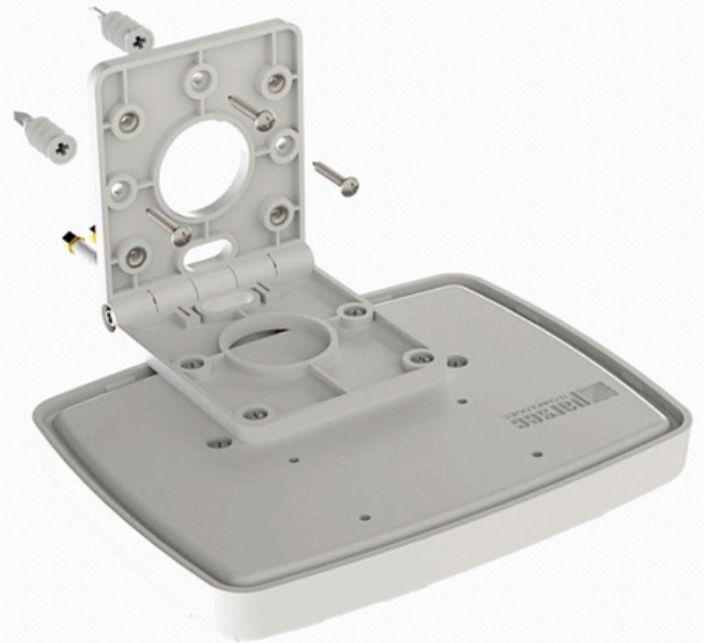


Variable Mount

Product Images



Wall Mount



Product Images Cont'd

Window Mount



Desktop Mount



Electrical Specifications

ID & Unit	Port	Parameters	Typ.
Radiated Efficiency (%)	CELL 1, 2	617-663 MHz	55
	CELL 1, 2	663-698 MHz	65
	CELL 1, 2	698-798 MHz	75
	CELL 1, 2	798-894 MHz	70
	CELL 1, 2	1710-1915 MHz	80
	CELL 1, 2	1915-2700 MHz	70
	CELL 1, 2	3400-4000 MHz	70
	CELL 1, 2	5150-5925 MHz	50
Peak Gain (dBi)	CELL 1, 2	617-663 MHz	1
	CELL 1, 2	663-698 MHz	1.5
	CELL 1, 2	698-894 MHz	2.5
	CELL 1, 2	1710-1915 MHz	3.5
	CELL 1, 2	1915-2700 MHz	4
	CELL 1, 2	3300-4000 MHz	4.5
	CELL 1, 2	5150-5925 MHz	3
Return Loss 50 ^Ω (dB)	CELL 1, 2	617-663 MHz	3
	CELL 1, 2	663-698 MHz	7
	CELL 1, 2	698-798 MHz	9
	CELL 1, 2	798-894 MHz	7
	CELL 1, 2	1710-1915 MHz	9
	CELL 1, 2	1915-2700 MHz	6
	CELL 1, 2	3300-4000 MHz	7
	CELL 1, 2	5150-5925 MHz	3
Isolation (dB)	CELL 1, 2	617-698 MHz	11
	CELL 1, 2	698-798 MHz	10
	CELL 1, 2	798-894 MHz	13
	CELL 1, 2	1710-1915 MHz	10
	CELL 1, 2	1915-2700 MHz	14
	CELL 1, 2	3300-4000 MHz	20
	CELL 1, 2	5150-5925 MHz	30
Polarization (dBi)	CELL		Linear
Max Input Power (Watts)	CELL		5
RF Connectors	CELL		SMA(M) N(F)
RF Cable Type	CELL		LSR200
<ul style="list-style-type: none"> Isolation, return loss, and peak gain does not include cable loss. Performance will be degraded if the antenna is mounted close to wiring or metal wall studs. SMA connectors have a max torque of 3-5 inch lbs. NF connectors have a max torque of 6.2-9.7 inch lbs. Parsec is currently phasing out inventory with LTE on our Cellular cables (now labeled CELL). For cables labeled LTE, please refer port "CELL" in the data sheets and installation instructions. 			

Part Number Key

Part number example of a 2:1 Chow antenna, white: PTA2CW2L15W

Description	Abbreviation	Part Number
All PTA Series	PTA	PTA
Number of Antennas in Housing/Configuration	2:1	PTA2
Antenna Abbreviation for Labrador	WM	PTACW
Number of CELL Elements	#L	PTA2CW2L
Cable Length Measured in Feet: 01=1', 15=15'	01, 15, etc.	PTA2CW2L15
Radome Color - W for White	W	PTA2CW2L15W
If SMA Connector, Simply Leave Blank		PTA2CW2L15W
Additional Options		
N Type Female Connector	-NF	PTA2CW2L01W-NF
Variable Mount (Desk Mount, Wall Mount, Window Mount)	-VM	PTACW2L15W-VM

Custom connectors and cable kits are available. Please contact us for more information at sales@parsec-t.com.

Ordering Standard Antennas

Configurations	Part Number	Description
2:1	PTA2CW2L01W	2 Cellular, 1 ft Cable, White,
	PTA2CW2L01W-NF	2 Cellular, 1 ft Cable, White, N Type Female
	PTA2CW2L15W	2 Cellular, 15 ft Cable, White,
	PTACW2L15W-VM	2 Cellular, 15 ft Cable, White, Variable Mounting System

N Type connector is recommended for outdoor usage due to it being waterproof. N Type is also best used for cable runs longer than 25 ft due to it being a stronger connection.

Additional Hardware Accessories

Accessory	Part Number
Replacement Pole Mount Assembly	PTA0147
Lightning Arrestor – SMA(F) to SMA(F)	PTA0476
Lightning Arrestor – N(F) to N(M)	PTA0736
SMA Wrench, Key Chain	PTA0194
Service: Cable Sleeving (Priced Per Ft)	Cable Sleeving



Parsec Antennas
972-804-4600
support@parsec-t.com