

PATENT PENDING
3 YEAR EXTENDED
WARRANTY



Eagle Pro Series

The New Standard for High-Performance Indoor
Mounted Antenna

Parsec's Newest Evolution for FWA



High-Performance Indoor Mounted Antenna

Parsec's Eagle Series is a rugged, semi-directional cellular antenna engineered for reliability when it matters most. With six separate ports supporting 4x4 MIMO cellular plus CBRS or Wi-Fi, the Eagle delivers high gain and exceptional efficiency across all common North American bands.

- **4x4 MIMO Cellular**
- **2X2 MIMO Wi-Fi**
- **Exceptional Gain and Efficiency**
- **Semi-Directional**
- **Ideal for Primary or Failover Connectivity**



Redefining Enterprise Connectivity

Stay Connected When Infrastructure Fails

In critical scenarios—such as natural disasters or infrastructure failures—the Eagle's semi-directional design enables long-distance communication by connecting to cell towers even when networks are compromised. It's the dependable solution for maintaining mission-critical connectivity when failure isn't an option.

Eagle Pro Series



High-Performance Indoor Mounted Antenna

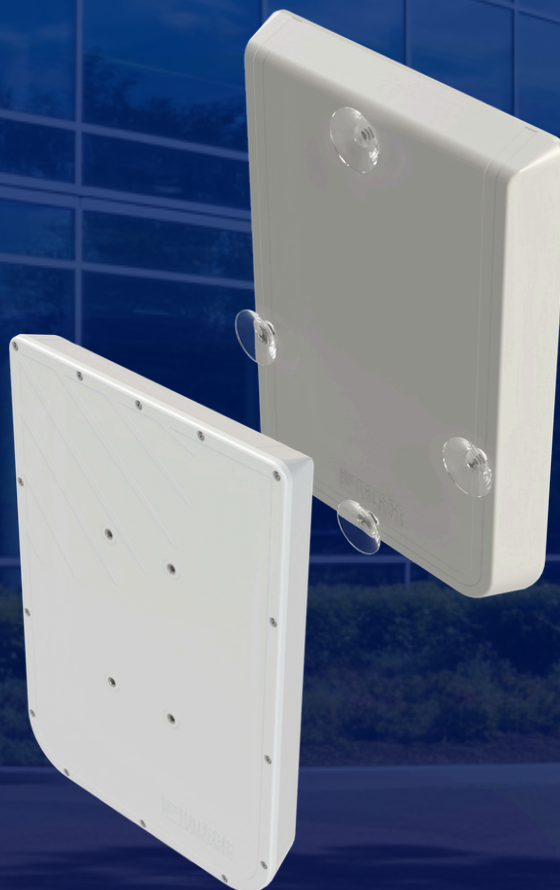
DIY | No Truck Roll Required!

Enterprise Innovation At It's Finest

Experience the next level of convenience with the Eagle Pro Series (60x60 Concept) — Featuring a suction cup window mount, it installs securely in seconds with **no drilling, truck rolls, or external mounting required**, allowing users to eliminate costly field installations while maintaining top-tier performance and reliable connectivity.

The Eagle provides unmatched performance for both cellular and CBRS networks. Optimized for all major North American bands, the Eagle delivers high-gain, high-efficiency coverage in even the most demanding environments.

Designed to extend reach and maintain strong, stable connections, the Eagle ensures reliable communications for public safety, remote operations, and enterprise connectivity.



High-Performance Indoor Mounted Antenna

Overcoming Low-E Glass Built for Extreme Durability

Unlike standard antennas affected by Low-E (low-emissivity) glass, the Eagle Pro Series maintains strong indoor connectivity. By mounting the router directly to the antenna, cable loss is minimized, preserving up to 75% of the original signal strength. Even with a 25% dB loss from Low-E glass, its direct-mount design ensures minimal signal degradation and consistent, high-speed performance.



Optional Router Mounting on Back of the Eagle

Built to Withstand it All

Applications



Primary or Failover



Public Safety



Hospitals



Video Streaming



Military Bases



Long Distance Connection

Why Choose the Eagle

- 4x4 MIMO Cellular
- 2X2 MIMO Wi-Fi
- No Truck Roll
- Exceptional Gain and Efficiency
- Semi-Directional
- Ideal for Primary or Failover Connectivity





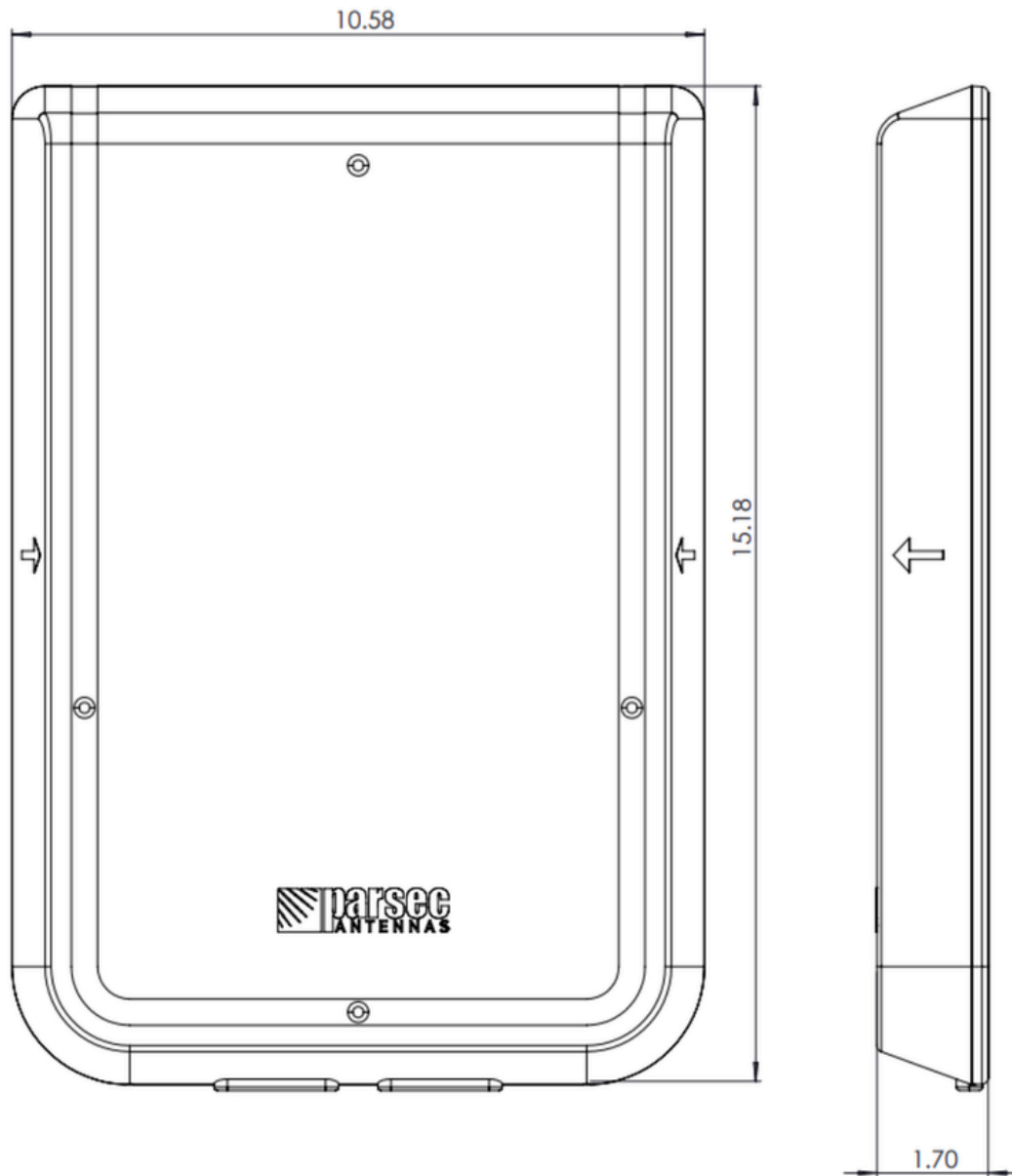
Specification Overview

PRO Eagle Series		
Applications	Sheriff Offices, Government Facilities, Healthcare Centers	
Configurations	4:1 - 4 CELL 6:1 - 4 CELL, 2 Wi-Fi 6:1 - 4 CELL, 2 CBRS	
Categories:	Public Safety, Enterprise	
Antennas Included:	Cellular, Wi-Fi, OR Cellular, CBRS	
Mount Type	Suction Mount	
Antenna Pattern:	Semi-Directional	
Available Colors	White	
Cable Type:	Cellular	LSR200
	Wi-Fi	LSR200
Standard Cable Length	6 FT, 15FT	
Standard Connector Options	Cellular/CBRS	SMA(M)
	Wi-Fi	RP-SMA(M)

Specifications

Frequencies			
4G/5G Cellular	617-894 MHz 1710 - 2700 MHz 3300-4100 MHz 5150 - 5925 MHz	CBRS/ C-Band	3300 - 4000 MHz
		Wi-Fi	2400 - 2483.5 MHz 4900 - 5900 MHz
4G/5G Bands			
North America		B2, B4, B5, B7, B12, B13, B14, B17, B25, B26, B29, B30, B41, B46, B48, B66, B71 n2, n5, n12, n25, n26, n41, n48, n66, n71, n77	
EMEA		B1, B3, B7, B20, B28, B42, B43, B46 n1, n3, n28, n77, n78	
Mechanical		Environmental	
Dimension	10.58 inch length, 15.18 inch height, 1.7 inch width	Operating Temperature	-40 °C to 85°C
Mounting	Single 1.5 in	Ingress Protection	IP54 for Outdoor Use
RF Cable Length	6 FT or 15 FT	Radome Material	Plastic with UV Additive
Connectors	CELL & CBRS: SMA(M) Wi-Fi: RP-SMA(M)	Cable Type	CELL & CBRS: LSR200 Wi-Fi: LSR200
For customizations, such as Connector Type, Cable Length, Color Configuration, and Branding, please reach out to Parsec at sales@parsec-t.com			

Dimensions



Electrical Specification

4 CELL, 2 Wi-Fi

<i>ID</i>	<i>Port</i>	<i>Parameters</i>	<i>Typ.</i>
Radiated Efficiency (%)	CELL 1 thru 4	617 - 798 MHz	65
	CELL 1 thru 4	798 - 894 MHz	70
	CELL 1 thru 4	1710 - 2700 MHz	80
	CELL 1 thru 4	3300 - 4000 MHz	75
	CELL 1 thru 4	5150 - 5925 MHz	65
	Wi-Fi-1 thru 2	2400 - 2483.5 MHz	80
	Wi-Fi-1 thru 2	4900 - 5900 MHz	65
Peak Gain (dBi)	CELL 1 thru 4	617 - 698 MHz	3
	CELL 1 thru 4	698 - 798 MHz	3.5
	CELL 1 thru 4	798 - 894 MHz	4
	CELL 1 thru 4	1710 - 2700 MHz	6
	CELL 1 thru 4	3300 - 4000 MHz	4
	CELL 1 thru 4	5150 - 5925 MHz	4.5
	Wi-Fi-1 thru 2	758 - 798 MHz	3.5
Wi-Fi-1 thru 2	4900 - 5900 MHz	5	
Return Loss 50 Ω (dB)	CELL 1 thru 4	617 - 894 MHz	7
	CELL 1 thru 4	1710 - 2400 MHz	12
	CELL 1 thru 4	2400 - 2700 MHz	9.5
	CELL 1 thru 4	3300 - 3550 MHz	8
	CELL 1 thru 4	3550 - 4000 MHz	5
	CELL 1 thru 4	5150 - 5600 MHz	8
	CELL 1 thru 4	5600 - 5925 MHz	5
Wi-Fi-1 thru 2	2400 - 2483.5 MHz	10	
Wi-Fi-1 thru 2	4900 - 5900 MHz	8	
Isolation (dB)	CELL	617 - 817 MHz	9.5
	CELL	817 - 894 MHz	11
	CELL	1710 - 2400 MHz	17
	CELL	2400 - 2700 MHz	23
	CELL	3300 - 4000 MHz	25
	CELL	5150 - 5925 MHz	25
	Wi-Fi-1 thru 2	2400 - 2483.5 MHz	35
Wi-Fi-1 thru 2	4900 - 5900 MHz	35	
Polarization (dBi)	CELL, Wi-Fi		Linear
Max Input Power (Watts)	CELL, Wi-Fi		5

RF Connectors	CELL Wi-Fi		SMA(M) RP-SMA(M)
RF Cable Type	CELL, Wi-Fi		LSR200
<ul style="list-style-type: none"> • Isolation, return loss, and peak gain do not include cable loss. • Electrical specifications based on antenna mounted away from other conductors 			

Electrical Specification

4 CELL, 2 CBRS

<i>ID</i>	<i>Port</i>	<i>Parameters</i>	<i>Typ.</i>
Radiated Efficiency (%)	CELL 1 thru 4	617 - 798 MHz	65
	CELL 1 thru 4	798 - 894 MHz	70
	CELL 1 thru 4	1710 - 2700 MHz	80
	CELL 1 thru 4	3300 - 4000 MHz	75
	CELL 1 thru 4	5150 - 5925 MHz	65
	C-1 thru 2	3300 - 4000 MHz	80
Peak Gain (dBi)	CELL 1 thru 4	617 - 698 MHz	3
	CELL 1 thru 4	698 - 798 MHz	3.5
	CELL 1 thru 4	798 - 894 MHz	4
	CELL 1 thru 4	1710 - 2700 MHz	6
	CELL 1 thru 4	3300 - 4000 MHz	4.5
	CELL 1 thru 4	5150 - 5925 MHz	4.5
	C-1 thru 2	3300 - 4000 MHz	5
Return Loss 50 Ω (dB)	CELL 1 thru 4	617 - 894 MHz	7
	CELL 1 thru 4	1710 - 2400 MHz	12
	CELL 1 thru 4	2400 - 2700 MHz	9.5
	CELL 1 thru 4	3300 - 3550 MHz	8
	CELL 1 thru 4	3550 - 4000 MHz	5
	CELL 1 thru 4	5150 - 5600 MHz	8
	CELL 1 thru 4	5600 - 5925 MHz	5
	C-1 thru 2	3300 - 3800 MHz	10
	C-1 thru 2	3800 - 4000 MHz	8.5

Isolation (dB)	CELL	617 - 817 MHz	9.5
	CELL	817 - 894 MHz	11
	CELL	1710 - 2400 MHz	17
	CELL	2400 - 2700 MHz	23
	CELL	3300 - 4000 MHz	25
	CELL	5150 - 5925 MHz	33
	C	3300 - 4000 MHz	26
	C to CELL	3300 - 4000 MHz	26
Polarization (dBi)	CELL, C		Linear
Max Input Power (Watts)	CELL, C		5
RF Connectors	CELL, C		SMA(M)
RF Cable Type	CELL, C		LSR200
<ul style="list-style-type: none"> Isolation, return loss, and peak gain do not include cable loss. Electrical specifications based on antenna mounted away from other conductors. 			

Part Number Key

Part Number Example for a 6:1 Eagle: PRO6E4L2W06W

<i>Description</i>	<i>Abbreviation</i>	<i>Part Number</i>
All PRO Series	PRO	PRO
Number of Antenna in Housing/Configuration	6:1	PRO6
Antenna Abbreviation for Eagle	E	PRO6E
Number of Cellular Elements	#L	PRO6E4L
CBRS Elements (CBRS Version Only)	#C	PRO4L2C
Number of Wi-Fi Elements (Wi-Fi Version Only)	#W	PRO6E4L2W
Cable Length Measured in Feet: 01 = 1 FT	06, 15, etc	PRO6E4L2W06
Radome Color: W = White	W	PRO6E4L2W06W
N Type Female Connector	-NF	PRO6E4L2W06W-NF
Customization options available: Custom Cable Lengths, Custom Colors, Custom Connectors, Cable Kits, Marine Grade, Custom Cable Labelling. MOQ Applicable. Please contact us for more information at sales@parsec-t.com.		

Ordering Guide

Maximum Configurations

<i>Config.</i>	<i>Part Number</i>	<i>Description</i>
4:1	PRO4E4L15W	4 Cellular, 15 FT Cable, White
6:1	PRO6E4L2W15W	4 Cellular, 2 Wi-Fi, 15 FT Cable, White

Hardware Accessories

Accessories	Part Number
Lightning Arrestor - SMA(F) to SMA(F)	PTA0476
Lightning Arrestor - N(F) to N(M)	PTA0736
SMA Wrench, Key Chain	PTA0194
Service: Cable Sleeving (Priced Per Ft)	Cable Sleeving
Replacement Parts	
Qty. 4 Suction Cups with Studs	PTA0893