



Belgian Shepherd Pro Series

Big Connectivity from a Low-Profile Design
High-Efficiency Mobile Performance in One Package



Belgian Shepherd Pro Series



High-Efficiency Connectivity, Minimal Footprint Package

Dual-Modem Capabilities

Small Form, Massive Network Power.



The Belgian Shepherd PRO Series is a **compact 9:1 antenna** engineered for exceptional **multi-network** performance in modern **mobile communications**. Designed for reliability and efficiency, it integrates advanced **cellular, Wi-Fi,** and **GNSS** technology into a rugged, **low-profile** form factor built for demanding environments.

- **Dual 4X4 MIMO 5G Cellular**
- **4X4 MIMO Wi-Fi**
- **5G Omni-Directional Antenna**
- **High Efficiency, up to 85%**
- **Low Profile**

Belgian Shepherd Pro Series



High-Efficiency Connectivity, Minimal Footprint Package

Designed to Withstand the Road Ahead

Compact Form Factor with Extreme Weather Resistance

The Belgian Shepherd PRO Series antenna features a **low-profile, aerodynamic curved top** designed to withstand **highway speeds** while minimizing drag. Its rugged, **IP67-rated** enclosure and **powerful gasket sealing** provide protection against dust, water, and extreme weather conditions.



Water-Proof &
Speed-Proof

With a compact footprint and simple **one-hole mounting**, it ensures durability, ease of installation, and long-term reliability in demanding mobile environments. Its all-in-one design **reduces system complexity** while supporting **mission-critical** communications for public safety, command operations, and mobile deployments.

Built for Mission-Critical Mobility

Applications



Ambulances



Police & Fire



Urban Cities



City Buses



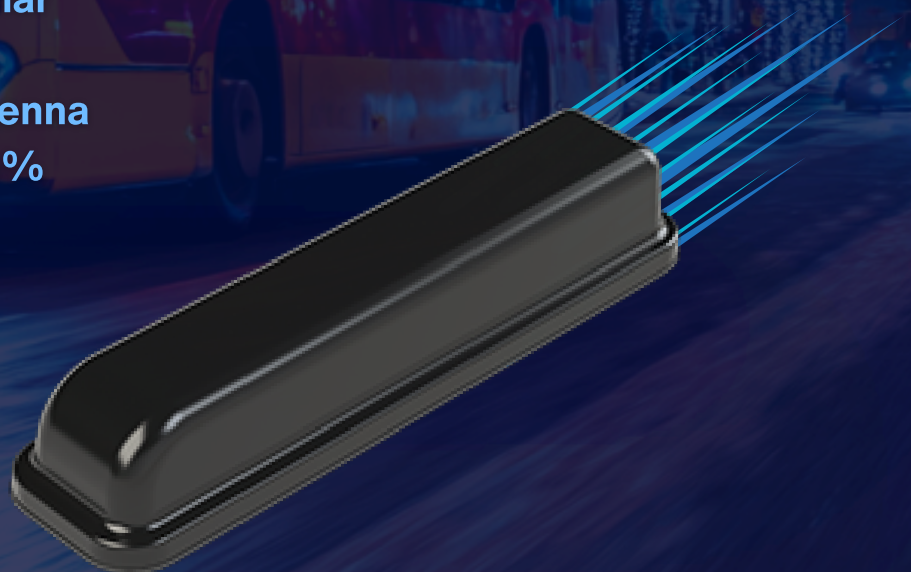
Remote Surveillance



Long Distance Connection

Why Choose the Belgian Shepherd

- Dual 4X4 MIMO 5G Cellular
- 4X4 MIMO Wi-Fi
- 5G Omni-Directional Antenna
- High Efficiency, up to 85%
- Low Profile





Specification Overview

PRO Belgian Shepherd Series		
Applications	Remote Network, Command Fleet, Public Safety	
Configurations	9:1 – 4 CELL, 4 Wi-Fi, L1/L5 Dual Band GPS	
Categories:	Enterprise, Public safety, 5G, RV	
Antennas Included:	Cellular, Wi-Fi, and GPS	
Mount Type	Roof Mount	
Mounting Accessories Available	Pole Mount, Mag Mount, Suction Cup Mount	
Antenna Pattern:	Omni-Directional	
Available Colors:	Black and White	
Cable Type:	Cellular	LSR200
	Wi-Fi	LSR200
	GPS	LSR100
Standard Cable Length	1 FT, 15 FT	
Standard Connector Options	Cellular	SMA(M)
	Wi-Fi	RP-SMA(M)
	GPS	SMA(M)

Specifications

<i>Frequencies</i>			
4G/5G Cellular	617-894 MHz 1710-2700 MHz 3400-4000 MHz 5150-5925 MHz	Wi-Fi	2400 - 2483.5 MHz 4900 - 5900 MHz
		L1 GPS	575.42 MHz
		L1/L5 Dual Band GPS	1563 – 1587 MHz 1164 – 1189 MHz
<i>4G/5G Bands</i>			
North America		B2, B4, B5, B7, B12, B13, B14, B17, B25, B26, B29, B30, B41, B46, B48, B66, B71 n2, n5, n12, n25, n26, n41, n48, n66, n71, n77	
EMEA		B1, B3, B7, B20, B28, B42, B43, B46 n1, n3, n28, n77, n78	
<i>Hardware</i>			
Dimension	14.96 inch Length x 3.82 inch Width x 2.44 inch Height	Operating Temperature	-40 °C to 85°C
Mounting	Single 1.5 in	Ingress Protection	IP67 Waterproof
RF Cable Length	1 FT or 15 FT	Radome Material	Plastic with UV Additive
Connectors	CELL: SMA(M) Wi-Fi: RP-SMA(M) GPS: SMA(M)	Cable Type	CELL: LSR200 Wi-Fi: LSR200 GPS: LSR100
For customizations, such as Connector Type, Cable Length, Color, Configuration, and Branding, please reach out to Parsec at sales@parsec-t.com .			

Electrical Specifications

<i>ID & Unit</i>	<i>Port</i>	<i>Parameters</i>	<i>Typ.</i>
Radiated Efficiency (%)	CELL 1 thru 4	617-894 MHz	70
	CELL 1 thru 4	1710-2700 MHz	80
	CELL 1 thru 4	3400-4000 MHz	60
	CELL 1 thru 4	5150-5925 MHz	50
	GPS	1575.42 MHz	80
	Wi-Fi 1 thru 4	2400-2483.5 MHz	70
	Wi-Fi 1 thru 4	4900-5900 MHz	70
Peak Gain (dBi)	CELL 1 thru 4	617-894 MHz	5
	CELL 1 thru 4	1710-2700 MHz	7
	CELL 1 thru 4	3400-4000 MHz	7
	CELL 1 thru 4	5150-5925 MHz	5
	Wi-Fi 1 thru 4	2400-2483.5 MHz	7
	Wi-Fi 1 thru 4	4900-5900 MHz	8
Return Loss 50Ω (dB)	CELL 1 thru 4	617-894 MHz	8
	CELL 1 thru 4	1710-2700 MHz	10
	CELL 1 thru 4	3400-4000 MHz	7
	CELL 1 thru 4	5150-5925 MHz	5
	GPS	1575.42 MHz	12
	Wi-Fi 1 thru 4	2400-2483.5 MHz	10
	Wi-Fi 1 thru 4	4900-5900 MHz	8
Isolation (dB)	CELL	617-894 MHz	7.5
	CELL	1710-2700 MHz	18
	CELL	3400-4000 MHz	20
	CELL	5150-5925 MHz	20
	Wi-Fi	2400-2483.5 MHz	17
	Wi-Fi	4900-5900 MHz	18
Polarization (dBi)	CELL, Wi-Fi		Linear
Max Input Power (Watts)	CELL, Wi-Fi		5
RF Connectors	CELL Wi-Fi		SMA(M) RP-SMA(M)
RF Cable Type	CELL, Wi-Fi		LSR200
<ul style="list-style-type: none"> • Isolation and return loss do not include cable loss. • SMA connectors have a max torque of 3-5 inch lbs. • Electrical specifications based on antenna with a 2 ft. x 2 ft. external ground plane. 			

GNSS Electrical Specifications

<i>ID & Unit</i>	<i>Port</i>	<i>Parameters</i>	<i>Typ.</i>
Antenna + Preamp Gain (dBic)	GPS	L1: 1563 – 1587 MHz L5: 1164 – 1189 MHz	28 26
Polarization	GPS		RHCP
Filter Rejection (dB)	GPS	1625 MHz	TBD
GNSS Preamp Voltage (mA)	GPS		3 to 5
GNSS Preamp Current (mA)	GPS		< 45mA
RF Connector	GPS		SMA(M)
RF Cable Type	GPS		LSR100

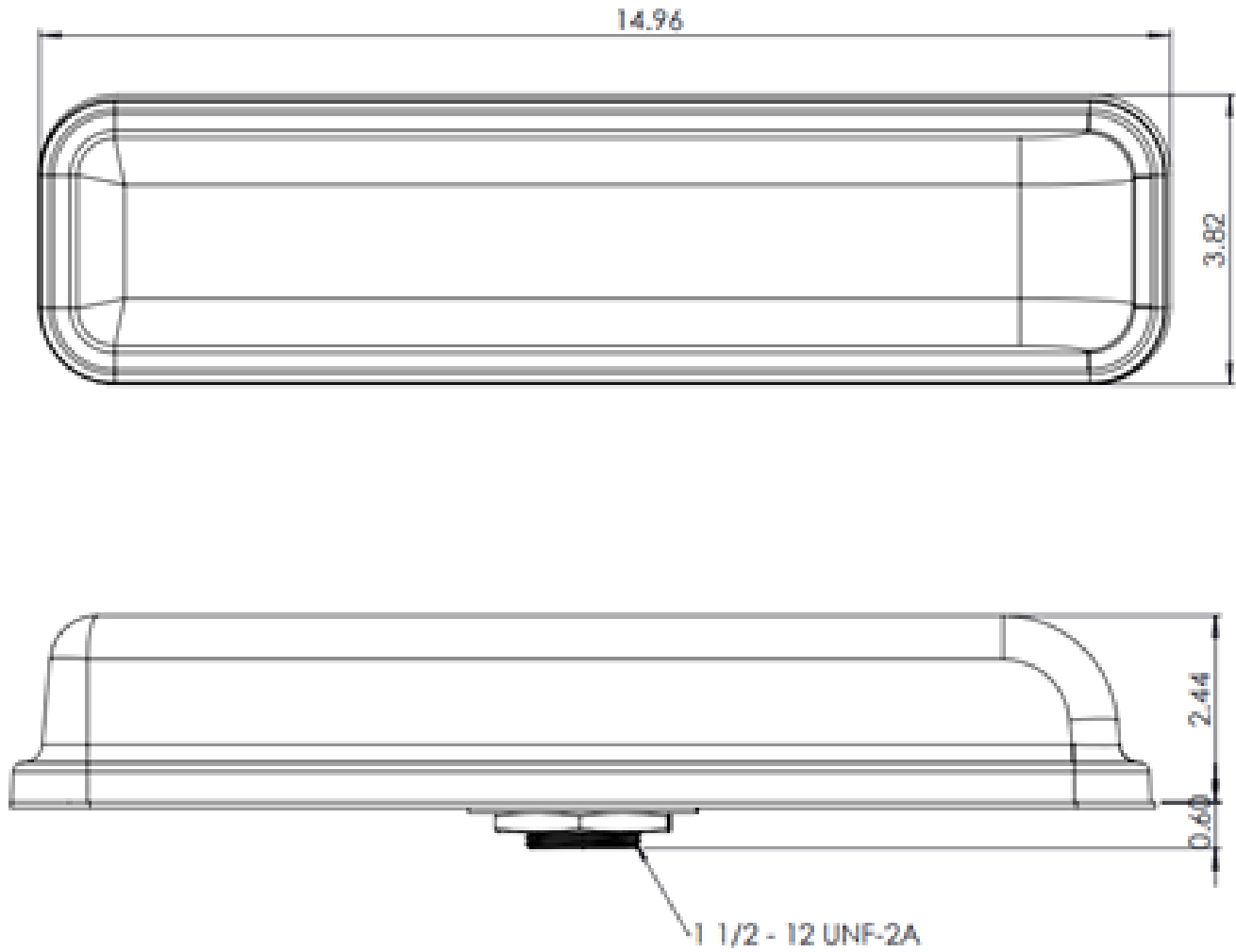
Part Number Key

Part number example for a 9:1 Belgian Shepherd: PRO9BS4L4WD15B

<i>Description</i>	<i>Abbreviation</i>	<i>Part Number</i>
All PRO Series	PRO	PRO
Number of Antenna in Housing/Configuration	9:1	PRO9
Antenna Abbreviation for Belgian Shepherd	BS	PRO9BS
Number of Cellular Elements	#L	PRO9BS4L
Number of Wi-Fi Elements	#W	PRO9BS4L4W
GPS Element: G = L1 GPS, D = L1/L5 Dual Band GPS	G or D	PRO9BS4L4WD
Cable Length Measured in Feet: 01 = 1 FT	01, 15, etc.	PRO9BS4L4WD15
Radome Color – B for Black, W for White	B or W	PRO9BS4L4WD15B
If SMA Connectors, simply leave Blank		PRO9BS4L4WD15B
Leave Blank for Standard 1.25” Bolt S= Short Bolt of 0.6”	S	PRO9BS4L4WD15BS

Custom connectors and cable kits are available. Please contact us for more information at sales@parsec-t.com.

Dimensions



Ordering Guide

<i>Config.</i>	<i>Part Number</i>	<i>Description</i>
9:1	PRO9BS4L4WD15B	4 Cellular, 4 Wi-Fi, L1/L5 Dual Band GPS, 15 FT Cable, Black
	PRO9BS4L4WD15BS	4 Cellular, 4 Wi-Fi, L1/L5 Dual Band GPS, 15 FT Cable, Black, Short Bolt

Hardware Accessories

Mounting Accessories	Part Number
Round Plate Pole Mount Bracket, 1.5" Hole	PTA0149H
Rectangle Pole Mount Bracket, 1.5" Hole	PTA0638
Customizable Pole Mount Bracket	PTA0640
Roof Mount Bracket Assembly with L Bracket, 1.5" Hole	PTA0641
Magnetic Boot Mount - Black	PTA0329
Accessories	
Gasket Assembly - Dodge Charger	PTA0342
Gasket Assembly - Ford Explorer	PTA0341
Gasket Assembly - 2021 Ford Explorer	PTA0643
One-Side Adhesive Gasket	PTA0454
Ground Plane with Adhesive Back, 20 in x 20 in, Can Be Cut to Size	PTA0587
Lightning Arrestor - SMA(F) to SMA(F)	PTA0476
Lightning Arrestor - N(F) to N(M)	PTA0736
SMA Wrench, Key Chain	PTA0194
Service: Cable Sleeving (Priced Per Ft)	Cable Sleeving
Replacement Parts	
Replacement Rooftop Gasket	PTA0292
Hardware Kit for 1.5" Shaft - Nut/Washer	PTA0761
1.5" Star Washer	PTA0257