



Dalmatian Pro Series

Tamper Proof Lockable Enclosure

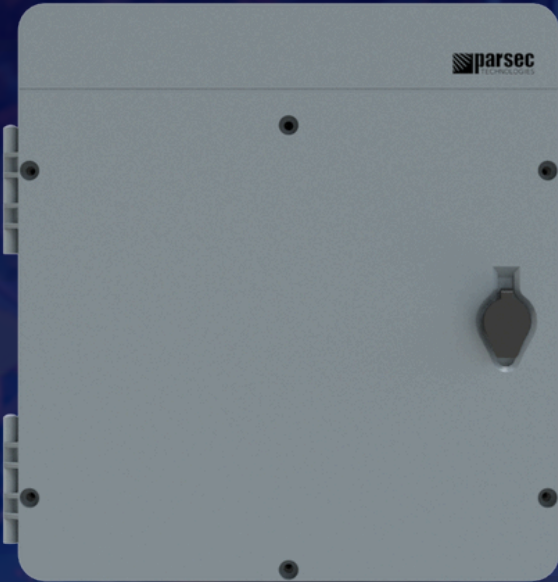
Revolutionizing NEMA Connectivity



Dalmatian Pro Series



Revolutionizing NEMA Connectivity

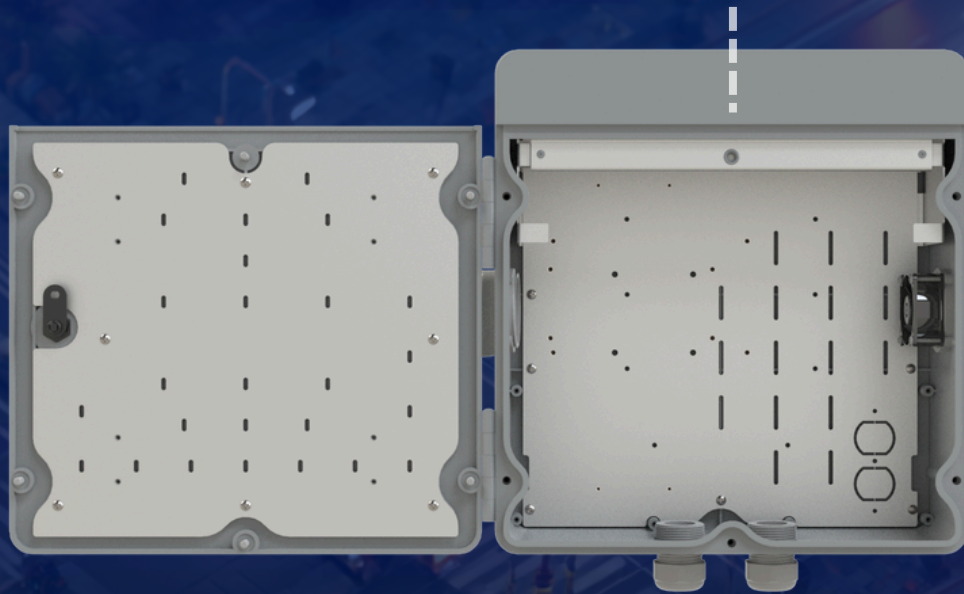


The Dalmatian PRO Series revolutionizes NEMA enclosures with reliable 5G connectivity. Our patent-pending design removes guesswork, offering a high-performance antenna that extends the edge of your cellular network.

ZERO TOUCH™
SECURE WIRELESS NETWORK

Antenna Built into the Lid

With support for **up to 6 cellular, 8 Wi-Fi, and GPS elements**, it enables seamless multi-router and mixed network operation without interference.



Hide in Plain Sight

Removes the need for a 2ft. X 2ft. Ground Plane for superior coverage



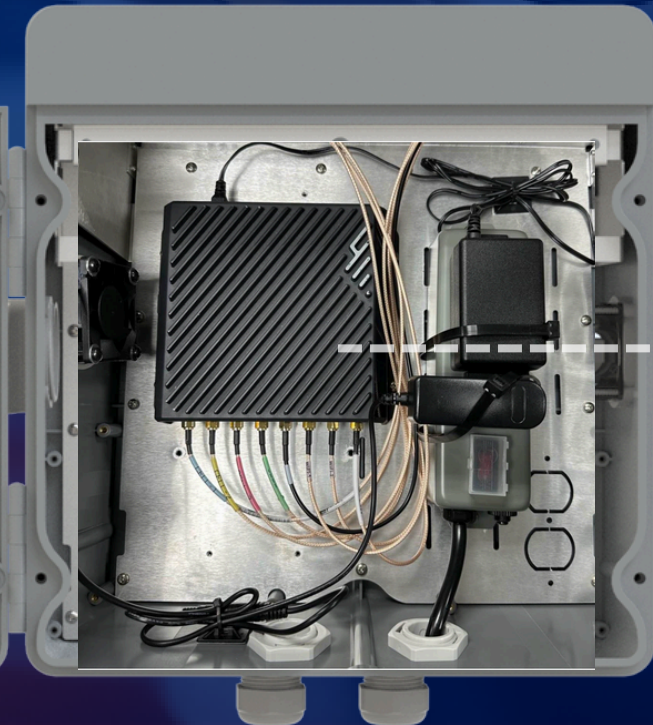
Dalmatian Pro Series

Revolutionizing NEMA Connectivity

Featuring **Zero Touch Secure Wireless Network™** and **RightPath Signal Technology™**, the Dalmatian ensures tamper-proof security and extended connectivity—ideal for security, Edge, remote locations, LPR, and video monitoring.

ZERO TOUCH™ SECURE WIRELESS NETWORK

- Hide your Router and Network in Plain Sight
- Lock & Key. Securely Bolted Down
- Nothing to Touch
- Zero Physical Access

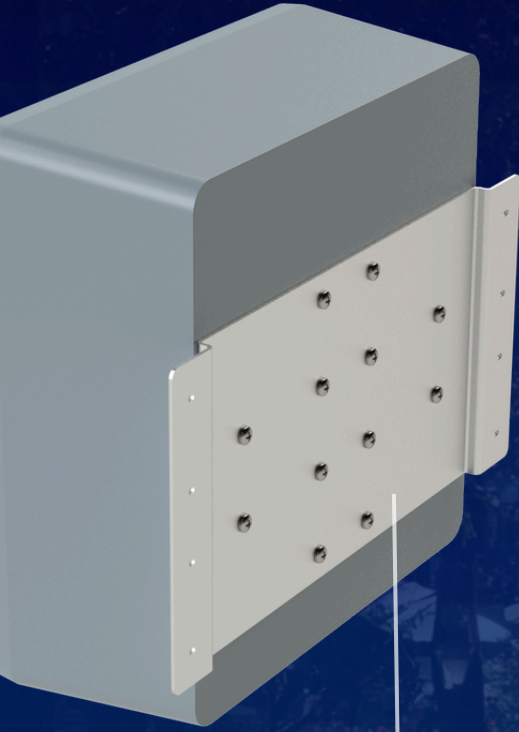


Ample amount of space to store router and other items



Built Securely for You

Applications



Wall Mount
Bracket

*Not included with the
Dalmatian*



Public Safety
Buildings



Traffic Control
Boxes



University
Campuses



K-12 Schools



Remote Video
Monitoring



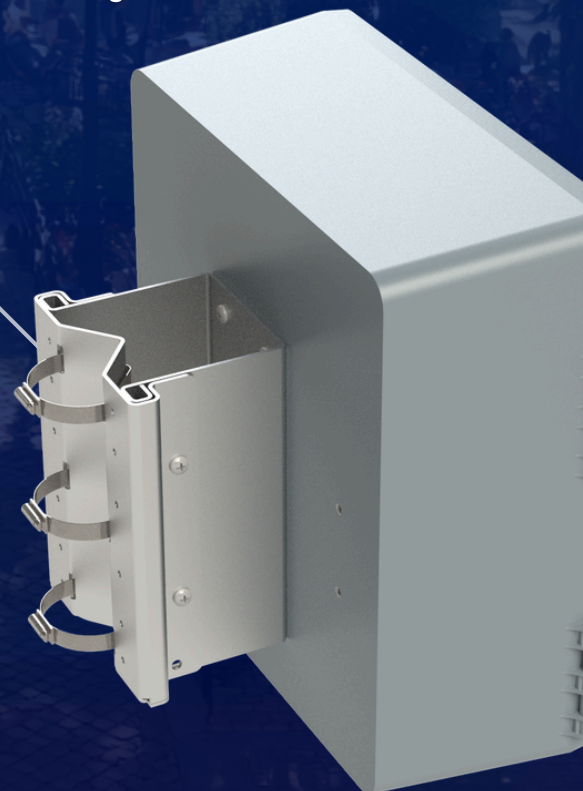
Public Wi-Fi

Pole Mount
Bracket

*Not included with the
Dalmatian*

Why Choose the Dalmatian

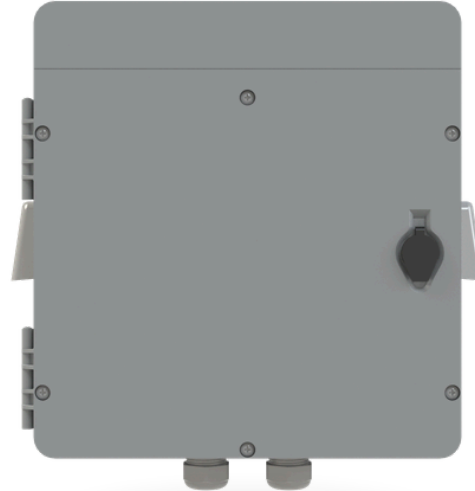
- ZeroTouch Secure Network
- RightPath Signal Technology
- No 2Ft X 2 FT Ground Plane
- Built for Security and Edge
- 6 CELL, 8 Wi-Fi, GPS
- Reliable 5G Connectivity



Standard Version



-L Version



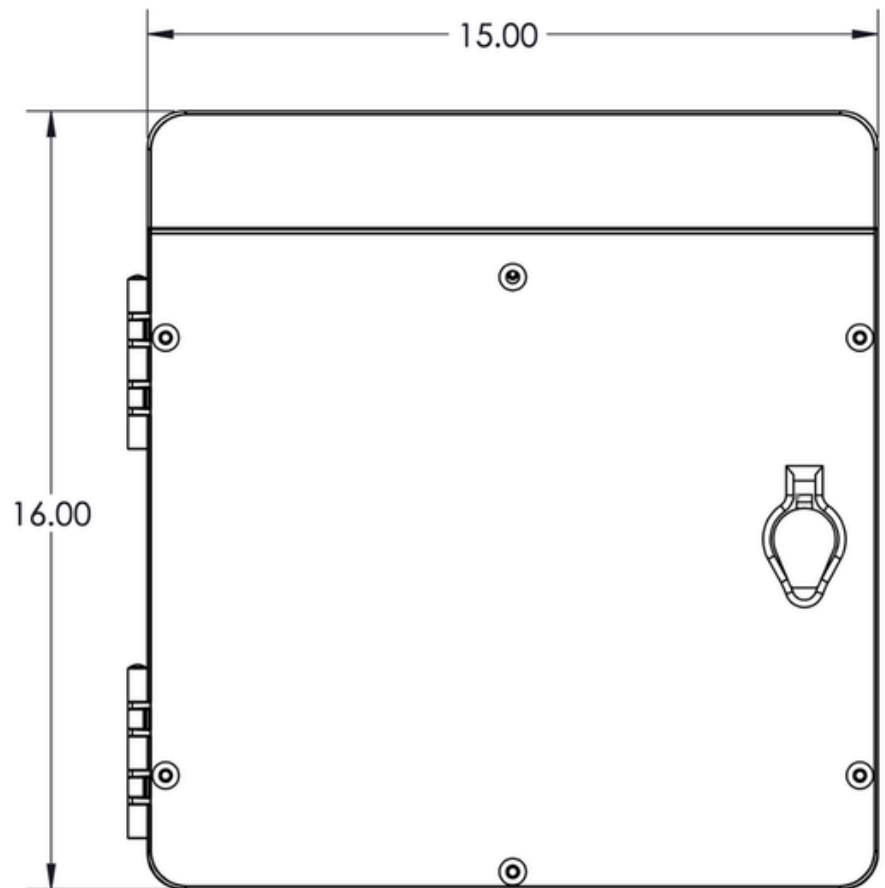
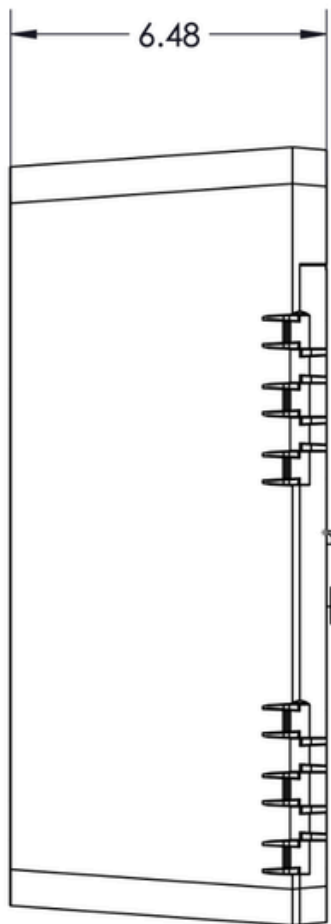
Specification Overview

PRO Dalmatian Series		
Applications	Public Wi-Fi, Enterprise, Traffic Control Boxes	
Configurations	15:1 – 6 CELL, 8 Wi-Fi, GPS 10:1 – 6 CELL, 2 Wi-Fi, Bluetooth, GPS 9:1 – 4 CELL, 4 Wi-Fi, GPS 8:1 – 4 CELL, 2 Wi-Fi, Bluetooth, GPS 7:1 – 4 CELL, 2 Wi-Fi, GPS 5:1 – 2 CELL, 2 Wi-Fi, GPS 4:1 – 4 CELL	
Categories:	Enterprise, Public Safety, Educational Campuses/Universities	
Antennas Included:	Cellular, PLTE, Wi-Fi, Bluetooth and GPS	
Mount Type:	Case/Enclosure	
Antenna Pattern:	Omni-Directional	
Available Colors:	Grey	
Cable Type:	Cellular Wi-Fi GPS	RG-316 RG-316 LSR100
Standard Cable Length:	15 IN Pigtails	
Standard Connector Options:	Cellular Wi-Fi GPS	SMA (M) or N(M) RP-SMA (M) SMA (M)

Specifications

Frequencies			
4G/5G Cellular	617-894 MHz 1710-2700 MHz 3300-4000 MHz 5150-5925 MHz	Wi-Fi	2400-2483.5 MHz 4900-5900 MHz
		GPS	1575.42 MHz
4G/5G Bands			
North America		B2, B4, B5, B7, B12, B14, B17, B25, B26, B29, B30, B41, B46, B48, B66, B71 n2, n5, n12, n25, n26, n41, n48, n66, n71, n77	
EMEA		B1, B3, B7, B20, B28, B42, B43, B46 n1, n3, n28, n77, n78	
Mechanical		Environmental	
Dimension	15 in X 16 in X 6.48 in	Operating Temperature	-40 °C to 85°C
Mounting	Pole Mount or Wall Mount	Ingress Protection	IP54 Waterproof (Closed)
Connectors	CELL: SMA(M) Wi-Fi: RP-SMA(M) GPS: SMA(M)	Radome Material	Plastic with UV Additive
		RF Cable Length	15 inch pigtailed
Compatible Routers	Ericsson R1900, Ericsson W1855, Nextivity SHIELD MegaFi, Peplink MAX BR1 Pro 5G	Max Router Configurations	6 Cellular, 8 Wi-Fi, GPS
<ul style="list-style-type: none"> • For customizations, such as Connector Type, Cable Length, Color, Configuration, and Branding, please reach out to Parsec at sales@parsec-t.com • For Different router configurations, reach out to Parsec for more information • Temperature range is for antenna only. Equipment installed inside the enclosure may have a different temperature range. <p>*Openings in the enclosure for options like fans and power cords may reduce ingress protection even with covers installed</p>			

Technical Drawing



Electrical Specifications

<i>ID</i>	<i>Port</i>	<i>Parameters</i>	<i>Typ.</i>
Radiated Efficiency (%)	CELL 1 thru 4	617 – 698 MHz	70
	CELL 1 thru 4	698 – 894 MHz	75
	CELL 1 thru 4	1710 – 1850 MHz	65
	CELL 1 thru 4	1850 – 2700 MHz	75
	CELL 1 thru 4	3300 – 4000 MHz	70
	CELL 1 thru 4	5150 – 5925 MHz	70
	CELL 5 & CELL 6	617 – 698 MHz	50
	CELL 5 & CELL 6	698 – 894 MHz	55
	CELL 5 & CELL 6	1710 – 1850 MHz	60
	CELL 5 & CELL 6	1850 – 2700 MHz	70
	CELL 5 & CELL 6	3300 – 4000 MHz	70
	CELL 5 & CELL 6	5150 – 5925 MHz	70
	Wi-Fi 1 thru 4	2400 – 2483.5 MHz	80
	Wi-Fi 1 thru 4	4900 – 5900 MHz	80
	Wi-Fi 5 thru 8	2400 – 2483.5 MHz	70
	Wi-Fi 5 thru 8	4900 – 5900 MHz	75
Peak Gain (dBi)	CELL 1 thru 4	617 – 698 MHz	2
	CELL 1 thru 4	698 – 894 MHz	3
	CELL 1 thru 4	1710 – 2200 MHz	4
	CELL 1 thru 4	2200 – 2700 MHz	4.5
	CELL 1 thru 4	3300 – 4000 MHz	6
	CELL 1 thru 4	5150 – 5925 MHz	5.5
	CELL 5 & CELL 6	617 – 698 MHz	0.5
	CELL 5 & CELL 6	698 – 894 MHz	1
	CELL 5 & CELL 6	1710 – 2400 MHz	4
	CELL 5 & CELL 6	2400 – 2700 MHz	4.5
	CELL 5 & CELL 6	3300 – 4000 MHz	6.6
	CELL 5 & CELL 6	5150 – 5925 MHz	6
	Wi-Fi 1 thru 4	2400 – 2483.5 MHz	4
	Wi-Fi 1 thru 4	4900 – 5900 MHz	5.5
	Wi-Fi 5 thru 8	2400 – 2483.5 MHz	3.5
	Wi-Fi 5 thru 8	4900 – 5900 MHz	6

Return Loss (50 Ω) (dB)	CELL 1 thru 4	617 – 894 MHz	12
	CELL 1 thru 4	1710 – 1850 MHz	9
	CELL 1 thru 4	1850 – 2400 MHz	11
	CELL 1 thru 4	2400 – 2700 MHz	9.5
	CELL 1 thru 4	3300 – 3800 MHz	10
	CELL 1 thru 4	3800 – 4000 MHz	8
	CELL 1 thru 4	5150 – 5925 MHz	8
	CELL 5 & CELL 6	617 – 894 MHz	10
	CELL 5 & CELL 6	1710 – 1850 MHz	8
	CELL 5 & CELL 6	1850 – 2400 MHz	9.5
	CELL 5 & CELL 6	2400 – 2700 MHz	8.5
	CELL 5 & CELL 6	3300 – 3800 MHz	10
	CELL 5 & CELL 6	3800 – 4000 MHz	9
	CELL 5 & CELL 6	5150 – 5925 MHz	9
	Wi-Fi 1 thru 4	2400 – 2483.5 MHz	12
	Wi-Fi 1 thru 4	4900 – 5900 MHz	12
Wi-Fi 5 thru 8	2400 – 2483.5 MHz	10	
Wi-Fi 5 thru 8	4900 – 5900 MHz	12	
Isolation (dB)	CELL	617-698 MHz	7
	CELL	698-894 MHz	8
	CELL	1710-2400 MHz	17
	CELL	2400-2700 MHz	13
	CELL	3300-4000 MHz	18
	CELL	5150-5925 MHz	22
	Wi-Fi	2400-2483.5 MHz	13
	Wi-Fi	4900-5900 MHz	22
Polarization	CELL, WiFi		Linear
Max Input Power (Watts)	CELL, WiFi		5
RF Connectors	CELL WiFi		SMA(M) RP-SMA(M)
RF Cable Type	CELL WiFi		RG-316 LSR100
<ul style="list-style-type: none"> • Isolation and return loss do not include cable loss from 15 inch cables supplied • Electrical Specifications based on antenna mounted in the top of the plastic enclosure 			

GNSS Electrical Specifications

<i>ID & Unit</i>	<i>Port</i>	<i>Parameters</i>	<i>Typ.</i>
Antenna + Preamp Gain (dBic)	GPS	1570 – 1581 MHz	33
Polarization	GPS		RHCP
Filter Rejection (dB)	GPS	1625 MHz	12
GNSS Preamp Voltage (mA)	GPS		2.2 to 5
GNSS Preamp Current (mA)	GPS		5 to 15
RF Connector	GPS		SMA(M)
RF Cable Type	GPS		LSR100

Part Number Key

Part Number Example for a 15:1 Dalmatian Grey: PRO15DM6L8WGG

<i>Description</i>	<i>Abbreviation</i>	<i>Part Number</i>
All PRO Series	PRO	PRO
Number of Antenna in Housing/Configuration	15:1	PRO15
Antenna Abbreviation for Dalmatian	DM	PRO15DM
Number of Cellular Elements	#L	PRO15DM6L
Number of Wi-Fi Elements	#W	PRO15DM6L8W
Number of GPS Elements	G	PRO15DM6L8WG
Radome Color: G for Grey	G	PRO15DM6L8WGG
SMA Connector, simply leave blank		
L-Version with 1 AC Power Strip, Fan, and Vent	L	PRO15DM6L8WGG-L

For customizations, such as Connector Type, Cable Length, Configuration, and Branding, please reach out to Parsec at sales@parsec-t.com

<i>Description</i>	<i>PRO15DM6L8WGG</i>	<i>-L Version</i>
Antenna	Yes	Yes
Fan and Vent	No	Yes
Drain Holes	No	Yes
2x Cable Glands	No	Yes
Router Mount Plate	No	Yes

Ordering Guide

Maximum Configurations

Configuration	Part Number	Description
4:1	PRO4DM4LG-NM	4 Cellular, Grey, NM Connectors
	PRO4DM4LG-NM-L	4 Cellular, Grey, NM Connectors, 1 AC Power Strip, Fan and Vent
7:1	PRO7DM4L2WGG	4 Cellular, 2 Wi-Fi, GPS, Grey
	PRO7DM4L2WGG-L	4 Cellular, 2 Wi-Fi, GPS, Grey, AC Power Strip, Fan and Vent
9:1	PRO9DM4L4WGG	4 Cellular, 4 Wi-Fi, GPS, Grey
	PRO9DM4L4WGG-L	4 Cellular, 4 Wi-Fi, GPS, Grey, AC Power Strip, Fan and Vent
15:1	PRO15DM6L8WGG	6 Cellular, 8 Wi-Fi, GPS, Grey
	PRO15DM6L8WGG-L	6 Cellular, 8 Wi-Fi, GPS, Grey, AC Power Strip, Fan and Vent

Hardware Accessories

Accessories	Part Number
Dalmatian Wall Mount Bracket	PTA1001
Dalmatian Pole/Wall Mount Bracket	PTA1002
Replacement Parts	
Replacement Keys (Set of 2)	PTA0972
Lid Closing Screw Kit	PTA0973
SMA Wrench, Key Chain	PTA0194
Service: Router Installation	PTA-Install-185